

OAK HARBOR, WASHINGTON

# TACAN Y RWY 14

TACAN NUV Chan <b>85</b>	APCH CRS <b>141°</b>	Rwy Idg TDZE Arprt Elev <b>8000</b> <b>39</b> <b>47</b>
-----------------------------	-------------------------	--

[USN]

WHIDBEY ISLAND NAS (AULT FLD) (KNUW)

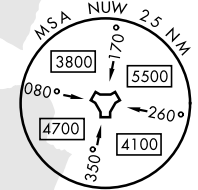
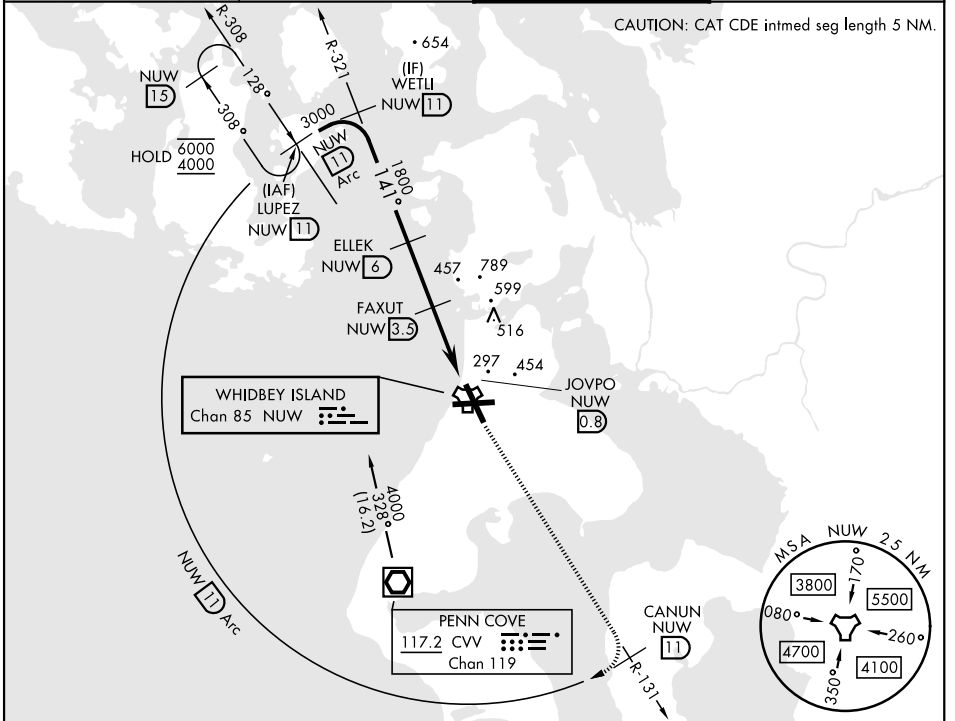
▼ \* When ALS inop, increase CAT AB RVR to 55, vis to 1 mile, CAT CDE vis to 1½ miles.



MISSED APPROACH: Climb to 4000 via NUW TACAN R-131 to CANUN, then arc SW of NUW via 11 DME Arc to LUPEZ and hold.

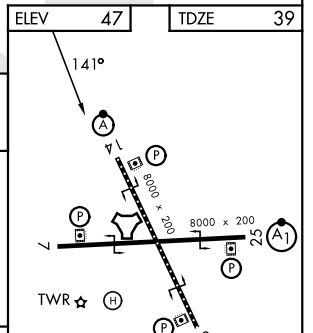
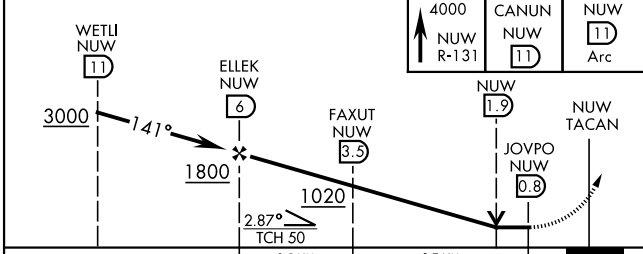
ATIS <b>134.15 281.5</b>	WHIDBEY APP CON <b>120.7 270.8 (E)</b> <b>118.2 285.65 (W)</b>	WHIDBEY TOWER <b>127.9 340.2</b>	GND CON <b>121.75 336.4</b>
-----------------------------	--	-------------------------------------	--------------------------------

CAUTION: CAT CDE innted seg length 5 NM.



ELEV 47	TDZE 39
---------	---------

EMERG SAFE ALT 100 NM 16,600



CATEGORY	A	B	C	D	E
S-14 *	560/24	521 (600-½)	560/55 521 (600-1)		
CIRCLING	760-1	713 (800-1)	860-2½ 813 (900-2½)	900-2¾ 853 (900-2¾)	1200-3 1153 (1200-3)

HIRL Rwy 7-25, 14-32  
TDZL/RCLS Rwy 14

OAK HARBOR, WASHINGTON 48°21'N-122°39'W WHIDBEY ISLAND NAS (AULT FLD) (KNUW)

Amdt 5 19FEB26

# TACAN Y RWY 14

NW-1, 16 APR 2026 to 14 MAY 2026

NW-1, 16 APR 2026 to 14 MAY 2026