

OAK HARBOR, WASHINGTON

TACAN Y RWY 7

TACAN Chan 85	APCH CRS 058°	Rwy ldg TDZE Arprt Elev	8000 25 47
-------------------------	-------------------------	-------------------------------	---------------------------------------

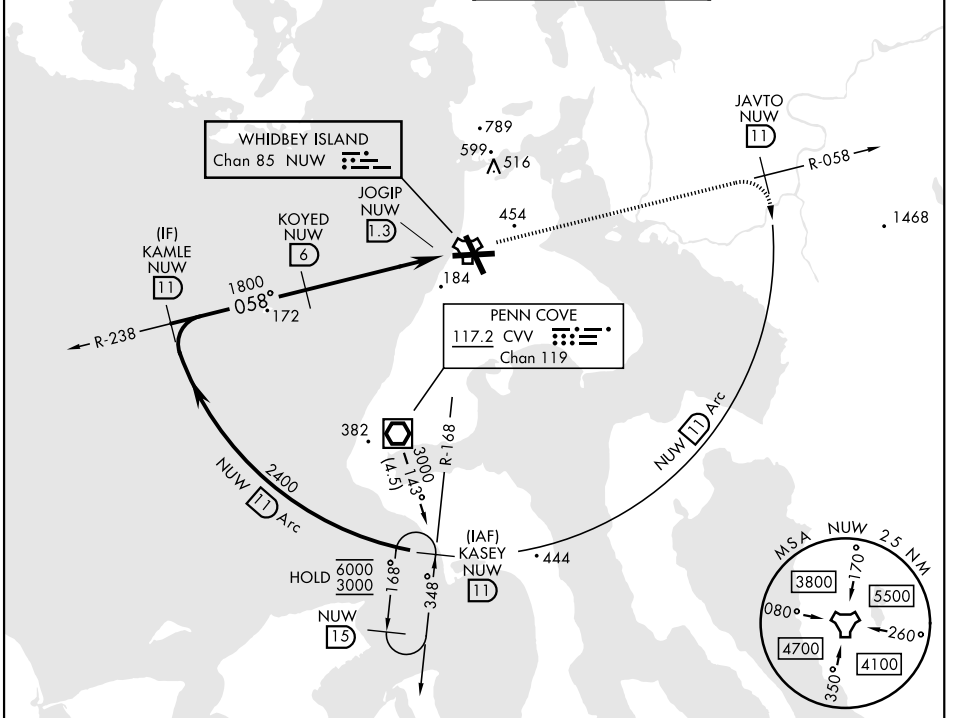
[USN]

WHIDBEY ISLAND NAS (AULT FLD) (KNUW)

CAUTION: CAT CDE intmed seg length 5 NM

MISSED APPROACH: Climb to 3000 via NUW TACAN R-058 to JAVTO, then arc SE of NUW via 11 DME Arc to KASEY and hold.

ATIS 134.15 281.5	WHIDBEY APP CON 120.7 270.8 (E) 118.2 285.65 (W)	WHIDBEY TOWER 127.9 340.2	GND CON 121.75 336.4
-----------------------------	--	-------------------------------------	--------------------------------

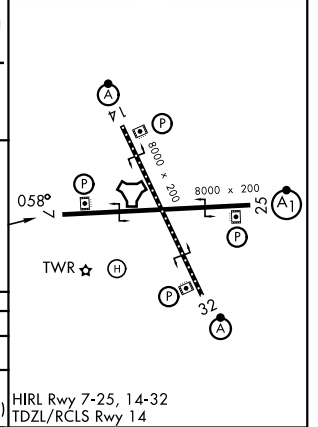
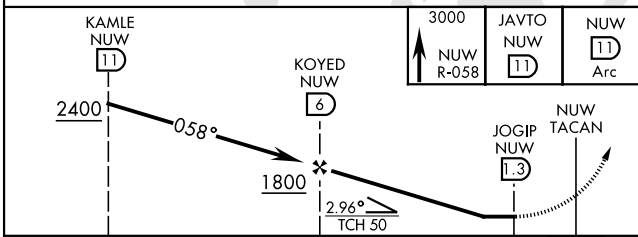


NW-1, 16 APR 2026 to 14 MAY 2026

NW-1, 16 APR 2026 to 14 MAY 2026

ELEV	47	TDZE	25
------	----	------	----

EMERG SAFE ALT 100 NM 16,600



CATEGORY	A	B	C	D	E
S-7	440/55 415 (400-1)		440/60 415 (400-1½)		
CIRCLING	760-1 713 (800-1)		860-2½ 813 (900-2½)	900-2¾ 853 (900-2¾)	1200-3 1153 (1200-3)

OAK HARBOR, WASHINGTON

48°21'N-122°39'W

WHIDBEY ISLAND NAS (AULT FLD) (KNUW)

Amdt 5 19FEB26

TACAN Y RWY 7