

ILS or LOC RWY 19R

LOC I-CWX 109.9	APCH CRS 188°	Rwy Idg 12,000 TDZE 1372 Arprt Elev 1372
---------------------------	-------------------------	---------------------------------------------------------------------

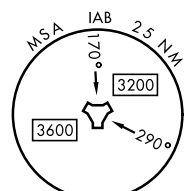
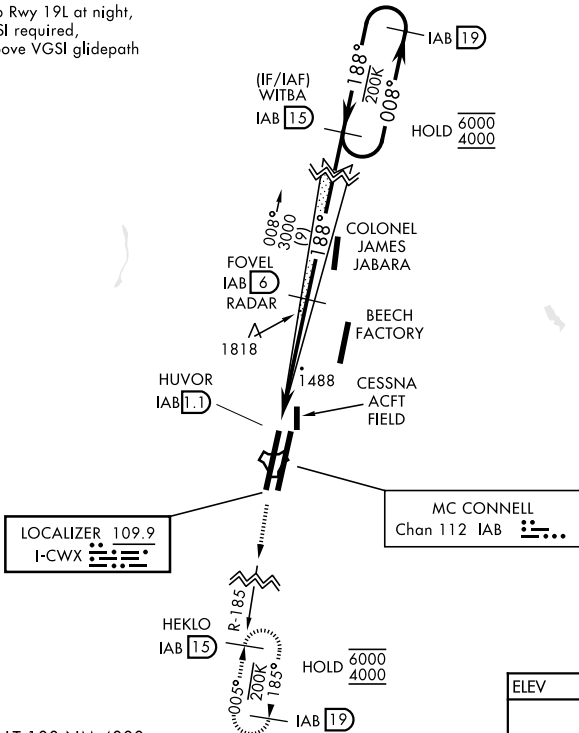
[USAF]

MC CONNELL AFB (KIAB)

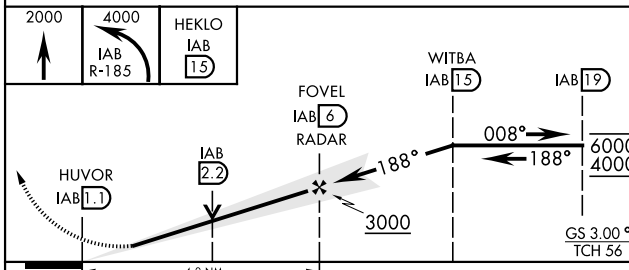
RADAR or DME required		ALSF-1 	MISSED APPROACH: Climb to 2000 then climbing left turn to 4000, intercept IAB TACAN R-185 to 15 DME (HEKLO) and hold. Expect further clearance from ATC.
▼ *When ALS inop, increase RVR to 40 and vis to 3/8 mile. ▼ **When ALS inop, increase CAT AB RVR to 55 and vis to 1 mile, CAT CDE vis to 1 3/8 miles. *** Circling not authorized W of Rwy 1L-19R.			

D-ATIS 124.65 269.9	WICHITA APP CON 134.8 269.1	TOWER 127.25 291.775	GND CON 118.0 275.8
-------------------------------	---------------------------------------	--------------------------------	-------------------------------

When circling to Rwy 19L at night, operational VGSI required, remain on or above VGSI glidepath until threshold.



EMERG SAFE ALT 100 NM 4000



ELEV	1372	TDZE	1372
HIRL all rwys			
FAF to MAP 4.9 NM			
Knots	60	90	120 150 180
Min:Sec	4:54	3:16	2:27 1:58 1:38

CATEGORY	A	B	C	D	E
S-ILS 19R **	1572/24		200	(200-1/2)	
S-LOC 19R **	1780/24	408 (500-1/2)	1780/40	408 (500-3/4)	
CIRCLING ***	1900-1	528 (600-1)	1900-1 1/2	1940-2	2400-3
			528 (600-1/2)	568 (600-2)	1028 (1100-3)

WICHITA, KANSAS
Amdt 8 12JUN25

37°37'N-97°16'W

MC CONNELL AFB (KIAB)

ILS or LOC RWY 19R

NC-2, 16 APR 2026 to 14 MAY 2026

NC-2, 16 APR 2026 to 14 MAY 2026