

WICHITA, KANSAS

ILS or LOC RWY 1L

LOC I-AB 111.1	APCH CRS 008°	Rwy Idg 12,000
		TDZE 1347
		Arprt Elev 1372

(USAF)

MC CONNELL AFB (KIAB)

RADAR or DME required	ALSF-1	MISSED APPROACH: Climb to 2000 then climbing right turn to 4000, intercept IAB TACAN R-011 to 15 DME (PURKE) and hold. Expect further clearance from ATC.
<p>▼ * When ALS inop, increase RVR to 40 and vis to 3/4 mile.</p> <p>** When ALS inop, increase RVR to 55 and vis to 1 mile.</p> <p>*** Circling not authorized W of Rwy 1L-19R.</p>		

D-ATIS 124.65 269.9	WICHITA APP CON 134.8 269.1	TOWER 127.25 291.775	GND CON 118.0 275.8
-------------------------------	---------------------------------------	--------------------------------	-------------------------------

When Circling to Rwy 19L at night, operational VGSI required, remain on or above VGSI glidepath until threshold.

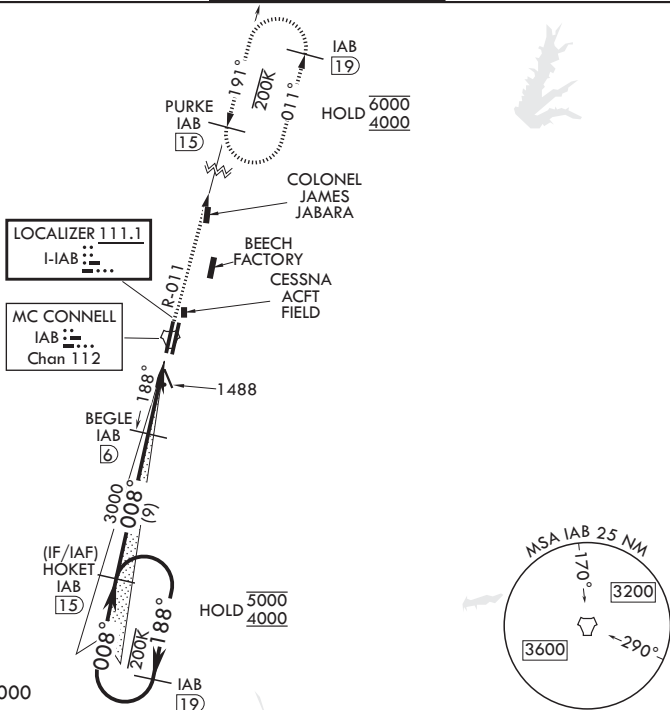
CAUTION: VGSI and ILS TCH are not coincidental.

Practice circling approaches NE of IAB not authorized.

Rwy 1L glideslope unusable for coupled approaches at or below 1533 MSL.

CAUTION: LOC front course unusable beyond 25° left/right of course.

RADAR required for holding above 4000



EMERG SAFE ALT 100 NM 4000

<p>HOKET IAB (15)</p> <p>5000 ← 188°</p> <p>4000 008° →</p> <p>GS 3.00°</p> <p>TCH 56</p>		<p>2000</p> <p>4000</p> <p>PURKE IAB (15)</p> <p>ELEV 1372</p>	<p>TDZE 1347</p>														
<p>BEGLE IAB (6)</p> <p>3000</p> <p>4.6 NM</p> <p>0.5 NM</p> <p>JIMIT IAB (1.4)</p>																	
CATEGORY	A	B	C	D	E												
S-ILS 1L*	1547/24		200	(200-½)													
S-LOC 1L**	1740/24	393 (400-½)	1740/35	393	(400-¾)												
CIRCLING***	1900-1	528 (600-1)	1940-1½ 568 (600-½)	1940-2 568 (600-2)	2400-3 1028 (1100-3)												
<p>FAF to MAP 4.6 NM</p> <table border="1"> <tr> <td>Knots</td> <td>60</td> <td>90</td> <td>120</td> <td>150</td> <td>180</td> </tr> <tr> <td>Min:Sec</td> <td>4:36</td> <td>3:04</td> <td>2:18</td> <td>1:50</td> <td>1:32</td> </tr> </table>						Knots	60	90	120	150	180	Min:Sec	4:36	3:04	2:18	1:50	1:32
Knots	60	90	120	150	180												
Min:Sec	4:36	3:04	2:18	1:50	1:32												

WICHITA, KANSAS

37°37'N - 97°16'W

MC CONNELL AFB (KIAB)

Amdt 8 12JUN25

ILS or LOC RWY 1L

NC-2, 16 APR 2026 to 14 MAY 2026

NC-2, 16 APR 2026 to 14 MAY 2026