

RNAV (GPS) RWY 1R

APCH CRS	Rwy Idg	12,007
005°	TDZE	1347
	Arprt Elev	1372

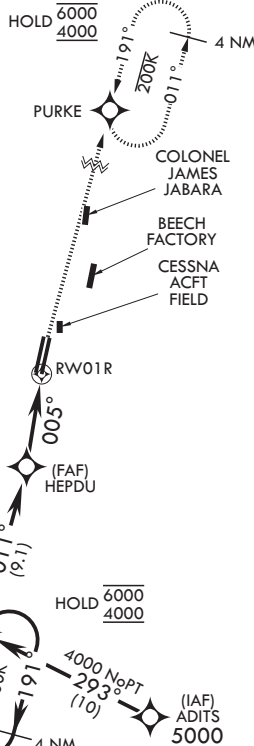
(USAF)

MC CONNELL AFB (KIAB)

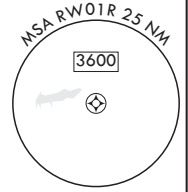
RNP APCH-GPS	SSALR	MISSED APPROACH: Climb to 2000 then climbing to 4000, direct PURKE and hold. Expect further clearance from ATC.
<p>▼ * When ALS inop, increase CAT AB RVR to 55, vis to 1 mile; CAT CDE vis to 1 1/4 miles.</p> <p>** Circling not authorized west of Rwy 1L-19R.</p>		

D-ATIS 124.65 269.9	WICHITA APP CON 134.8 269.1	TOWER 127.25 291.775	GND CON 118.0 275.8
-------------------------------	---------------------------------------	--------------------------------	-------------------------------

When circling to Rwy 19L at night, operational VGSI required, remain on or above VGSI glidepath until threshold.



RADAR required for holding abv 5000 or abv 230 KIAS.



EMERG SAFE ALT 100 NM 4000

4 NM Holding Pattern 	2000	4000	PURKE	ELEV 1372	TDZE 1347
CATEGORY	A	B	C	D	E
LNAV MDA*	1780/40		433	(500-¾)	
CIRCLING**	1900-1	528 (600-1)	1900-1½ 528 (600-1½)	1940-2 568 (600-2)	2400-3 1028 (1100-3)

RNAV (GPS) RWY 1R

NC-2, 16 APR 2026 to 14 MAY 2026

NC-2, 16 APR 2026 to 14 MAY 2026