

WICHITA, KANSAS

# RNAV (RNP) Z RWY 19R

APCH CRS <b>188°</b>	Rwy Idg TDZE Arprt Elev	<b>12,000</b> <b>1372</b> <b>1372</b>
-------------------------	-------------------------------	---

(USAF)

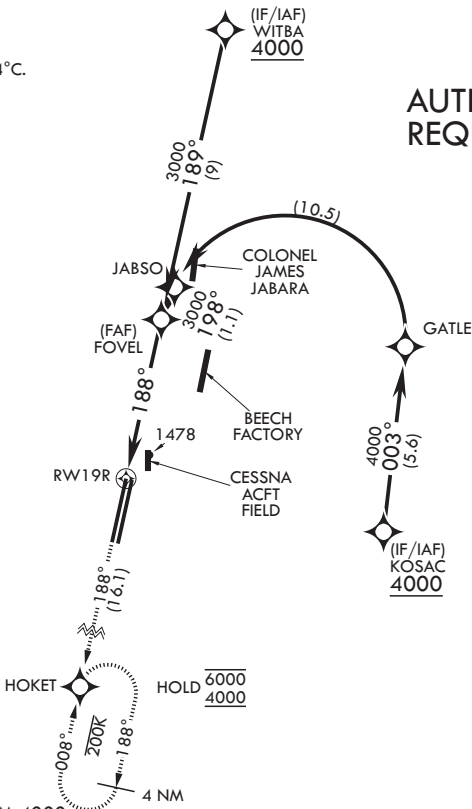
MC CONNELL AFB (KIAB)

RNP AR APCH-GPS	ALSF-1	MISSED APPROACH: Climb to 4000 direct HOKET and hold as published. Expect further clearance from ATC.
<p>▼ * When ALS inop, increase vis to 1 1/4 miles. ** When ALS inop, increase vis to 1 3/8 miles.</p>		

D-ATIS <b>124.65 269.9</b>	WICHITA APP CON <b>134.8 269.1</b>	TOWER <b>127.25 291.775</b>	GND CON <b>118.0 275.8</b>
-------------------------------	---------------------------------------	--------------------------------	-------------------------------

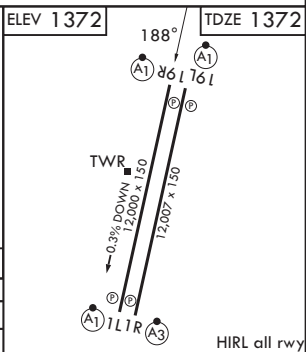
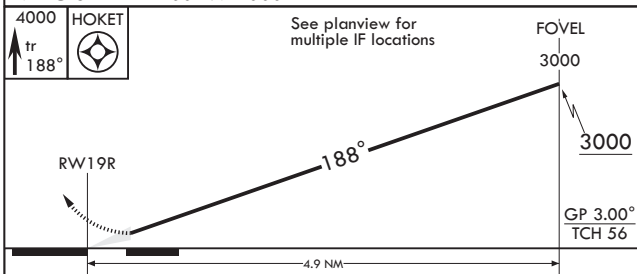
For uncompensated Baro-VNAV systems, procedure not authorized below -17°C. or above 54°C.

## AUTHORIZATION REQUIRED



RADAR required for holding above 5000 or above 230 KIAS

EMERG SAFE ALT 100 NM 4000



CATEGORY	A	B	C	D
RNP 0.10 DA*	1798/40	426	(500-3/4)	
RNP 0.30 DA**	1844/50	472	(500-1)	

WICHITA, KANSAS  
Amdt 1 12JUN25

37°37'N - 97°16'W

MC CONNELL AFB (KIAB)

# RNAV (RNP) Z RWY 19R

NC-2, 16 APR 2026 to 14 MAY 2026

NC-2, 16 APR 2026 to 14 MAY 2026