

APCH CRS 008°	Rwy Idg TDZE Arpt Elev	12,000 1347 1372
-------------------------	------------------------------	---

(USAF)

MC CONNELL AFB (KIAB)

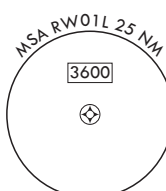
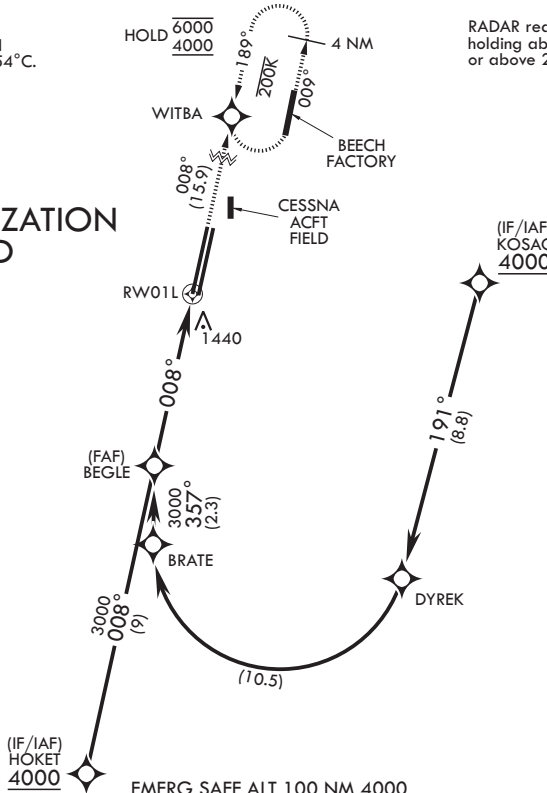
RNP AR APCH-GPS	ALS-1	MISSED APPROACH: Climb to 4000 direct WITBA and hold as published. Expect further clearance from ATC.
▼ * When ALS inop, increase RVR to 60, vis to 1 1/8 miles. ** When ALS inop, increase vis to 1 1/4 miles.		

D-ATIS 124.65 269.9	WICHITA APP CON 134.8 269.1	TOWER 127.25 291.775	GND CON 118.0 275.8
-------------------------------	---------------------------------------	--------------------------------	-------------------------------

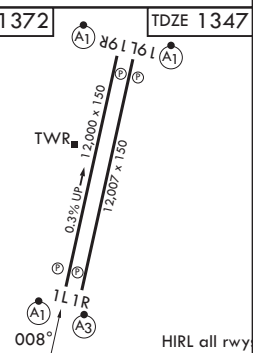
For uncompensated Baro-VNAV systems, Procedure not authorized below -17°C. or above 54°C.

RADAR required for holding above 5000 or above 230 KIAS

AUTHORIZATION REQUIRED



	See planview for multiple IF locations		4000	WITBA	ELEV 1372	TDZE 1347
CATEGORY	A	B	C	D		
RNP 0.10 DA*	1735/35	388	(400-%)			
RNP 0.30 DA**	1787/40	440	(500-%)			



NC-2, 16 APR 2026 to 14 MAY 2026

NC-2, 16 APR 2026 to 14 MAY 2026