

WICHITA, KANSAS

RNAV (GPS) Y RWY 19R

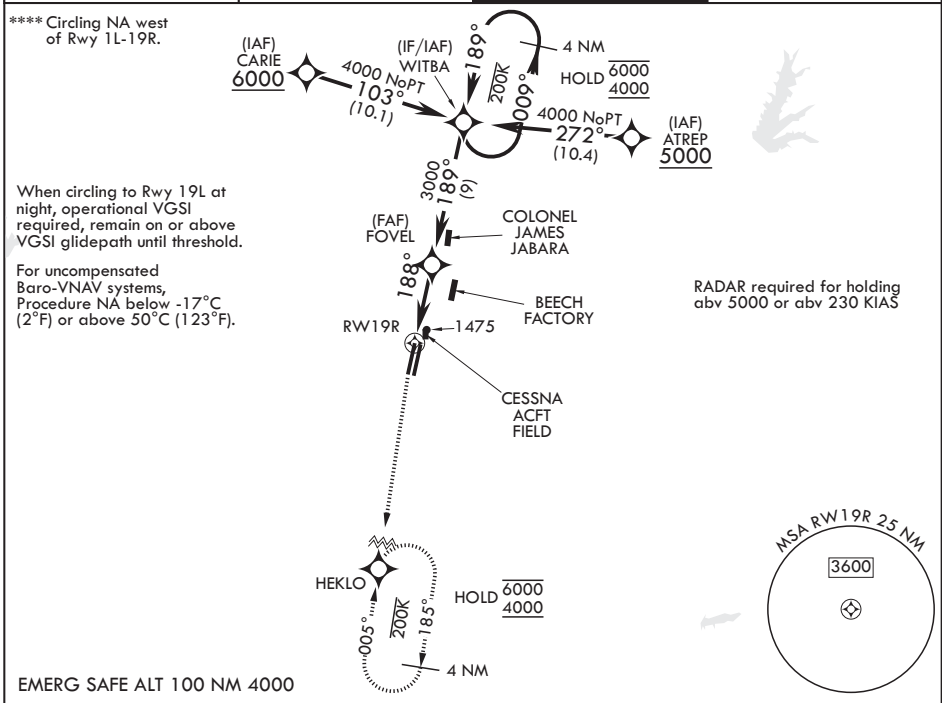
WAAS CH 71277 W19A	APCH CRS 188°	Rwy ldg 12,000	TDZE 1372
		Arprt Elev 1372	

(USAF)

MC CONNELL AFB (KIAB)

RNP APCH-GPS	ALSF-1 A1	MISSED APPROACH: Climb to 2000 then climbing to 4000 direct HEKLO and hold. Expect further clearance from ATC.
<p>▼ * When ALS inop, increase RVR to 40, vis to 3/4 mile. ** When ALS inop increase RVR to 55, vis to 1 mile. *** When ALS inop increase CAT AB RVR to 55, vis to 1 mile. CAT CDE vis to 1 3/8 miles.</p>		

D-ATIS 124.65 269.9	WICHITA APP CON 134.8 269.1	TOWER 127.25 291.775	GND CON 118.0 275.8
------------------------	--------------------------------	-------------------------	------------------------



NC-2, 16 APR 2026 to 14 MAY 2026

NC-2, 16 APR 2026 to 14 MAY 2026

		ELEV 1372	TDZE 1372		
CATEGORY	A	B	C	D	E
LPV DA*	1572/24		200	(200-½)	
LNAV/VNAV DA**	1748/35		376	(400-¾)	
LNAV MDA***	1820/24 448 (500-¾)		1820/45	448	(500-¾)
CIRCLING****	1900-1 528 (600-1)		1900-1½ 528 (600-1½)	1940-2 568 (600-2)	2400-3 1028 (1100-3)

HIRL all rwys

WICHITA, KANSAS
Amdt 7 12JUN25

37°37'N - 97°16'W

MC CONNELL AFB (KIAB)

RNAV (GPS) Y RWY 19R