

WICHITA, KANSAS

RNAV (GPS) Y RWY 1L

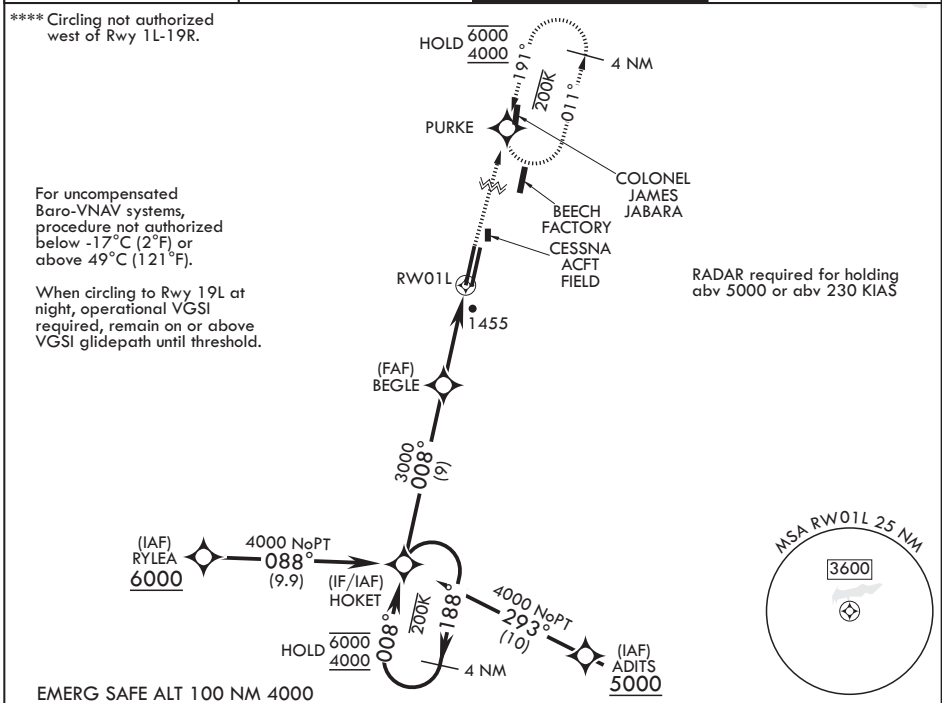
WAAS CH 71272 W01A	APCH CRS 008°	Rwy ldg TDZE Arprt Elev	12,000 1347 1372
--------------------------	------------------	-------------------------------	------------------------

(USAF)

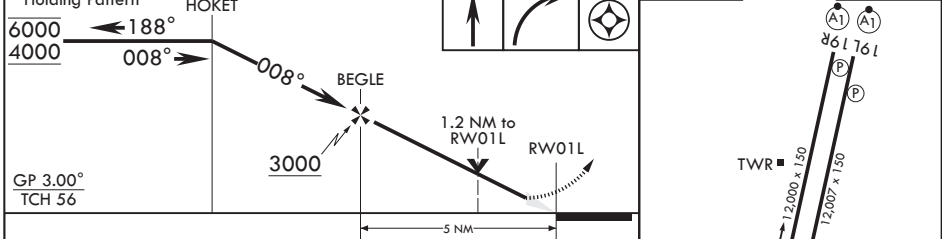
MC CONNELL AFB (KIAB)

RNP APCH-GPS	ALSF-1	MISSED APPROACH: Climb to 2000 then climbing to 4000, direct PURKE and hold. Expect further clearance from ATC.
<p>▼ * When ALS inop, increase RVR to 40, vis to 3/4 mile.</p> <p>** When ALS inop, increase RVR to 60, vis to 1 1/8 miles.</p> <p>*** When ALS inop, increase CAT AB RVR to 55, vis to 1 mile; CAT CDE RVR to 60, vis to 1 1/8 miles.</p>		

D-ATIS 124.65 269.9	WICHITA APP CON 134.8 269.1	TOWER 127.25 291.775	GND CON 118.0 275.8
------------------------	--------------------------------	-------------------------	------------------------



4 NM Holding Pattern	HOKET	2000	4000	PURKE	ELEV 1372	TDZE 1347
----------------------	-------	------	------	-------	-----------	-----------



CATEGORY	A	B	C	D	E
LPV DA*	1547/24		200	(200-1/2)	
LNAV/VNAV DA**	1742/35		395	(400-5/8)	
LNAV MDA***	1760/24	413 (400-1/2)	1760/40	413 (400-3/4)	
CIRCLING****	1900-1	528 (600-1)	1900-1 1/2 528 (600-1 1/2)	1940-2 568 (600-2)	2400-3 1028 (1100-3)

WICHITA, KANSAS
Amdt 6 12JUN25

37°37'N - 97°16'W

MC CONNELL AFB (KIAB)

RNAV (GPS) Y RWY 1L

NC-2, 16 APR 2026 to 14 MAY 2026

NC-2, 16 APR 2026 to 14 MAY 2026