

RNAV (GPS) RWY 15L

SHEPPARD AFB/WICHITA FALLS MUNI (KSPS)

APCH CRS	Rwy Idg	6000
153°	TDZE	1019
	Arpt Elev	1019

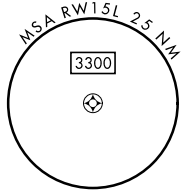
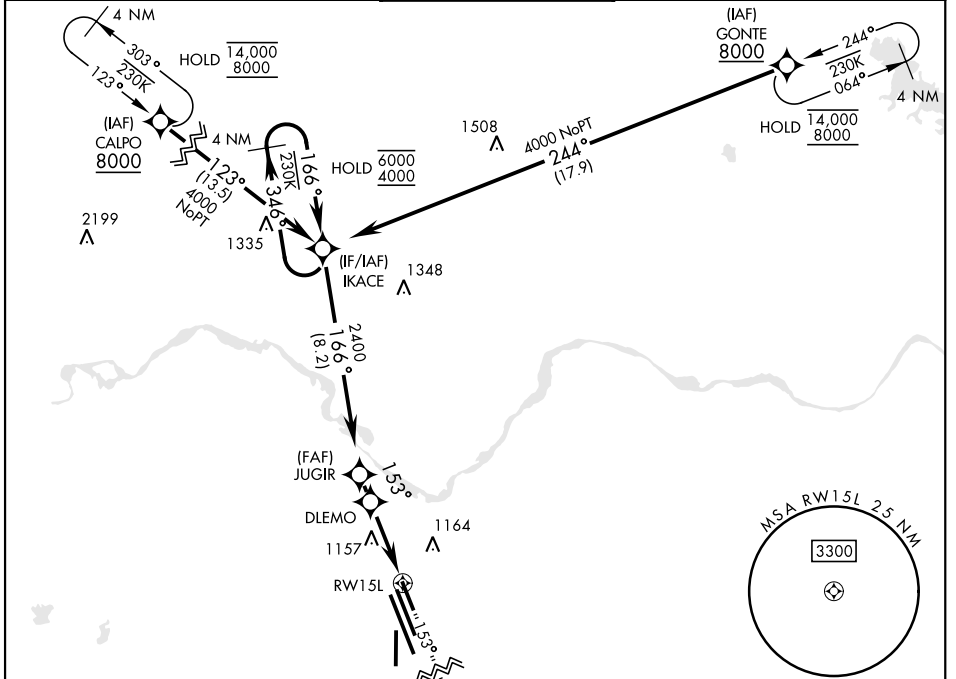
[USAF]

RNP APCH - GFS

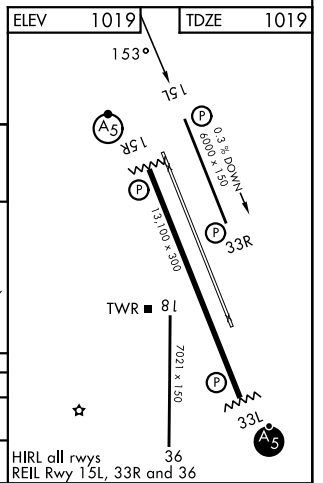
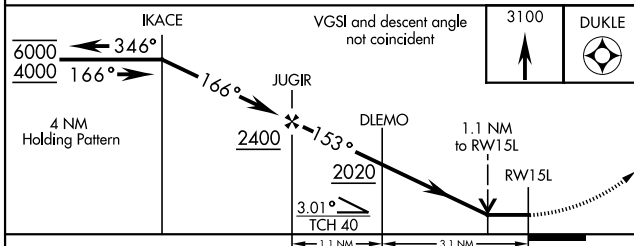
MISSED APPROACH: Climb to 3100 direct DUKLE and hold, continue climb-in-hold to 3100.

*Circling not authorized West of Rwy 15R/33L.

ATIS ★ 132.05 269.9	APP CON 118.2 269.025	TOWER ★ 119.75 0 279.525 (CTAF)	GND CON 125.5 289.4	ASR
-------------------------------	---------------------------------	---	-------------------------------	-----



EMERG SAFE ALT 100 NM 4600



CATEGORY	A	B	C	D	E
LNAV MDA	NA	1420-1 401 (500-1)	1420-1½ 401 (500-1½)	NA	NA
CIRCLING *	NA	1480-1 461 (500-1)	1480-1½ 461 (500-1½)	2100-3 1081 (1100-3)	NA

WICHITA FALLS, TEXAS

33°59'N-98°30'W

SHEPPARD AFB/WICHITA FALLS MUNI (KSPS)

Amdt 4 30OCT25

RNAV (GPS) RWY 15L

SC-2, 16 APR 2026 to 14 MAY 2026

SC-2, 16 APR 2026 to 14 MAY 2026