

LOC I-GMX 111.55	APP CRS 238°	Rwy Ldg 8016 TDZE 26 Apt Elev 32
----------------------------	------------------------	---

ILS Y RWY 24 (SA CAT I & II)

WILMINGTON INTL (ILM)

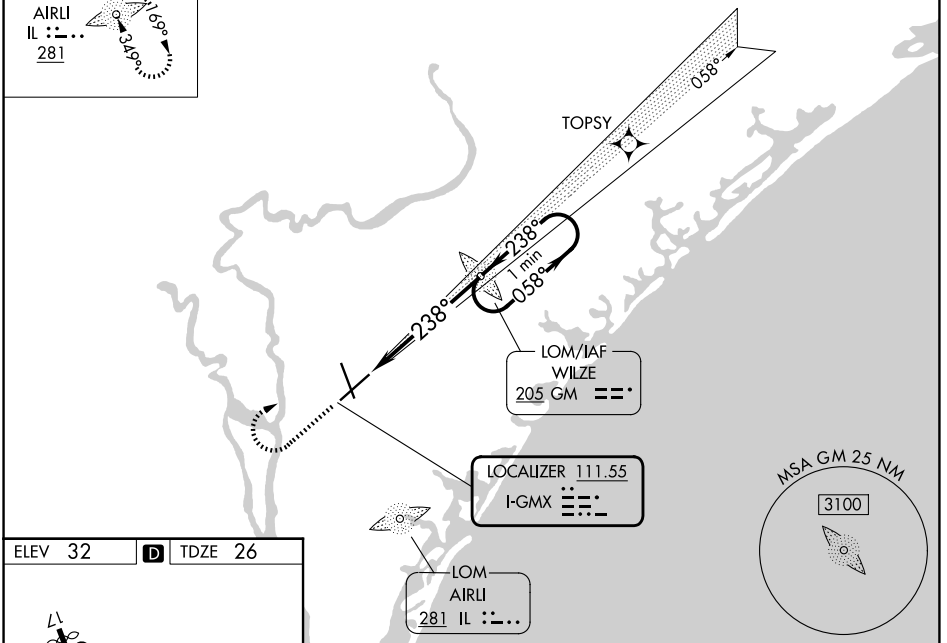
<p>▼ ADF required. SA CAT I: Requires specific OPSPEC, MSPEC, or LOA approval and use of HUD to DH. SA CAT II: Reduced lighting: requires specific OPSPEC, MSPEC, or LOA approval and use of autoland or HUD to touchdown. Procedure NA when tower closed.</p> <p>▲</p>	<p>MALSRL</p>	<p>MISSED APPROACH: Climb to 500 then climbing right turn to 1800 direct WILZE LOM and hold.</p>
---	---------------	--

ATIS 124.975	WILMINGTON APP CON★ 118.25 284.65 (164°-343°) 135.75 317.425 (344°-163°)	WILMINGTON TOWER★ 119.9 (CTAF) 0 239.3	GND CON 121.9 348.6	UNICOM 122.95
------------------------	--	---	-------------------------------	-------------------------

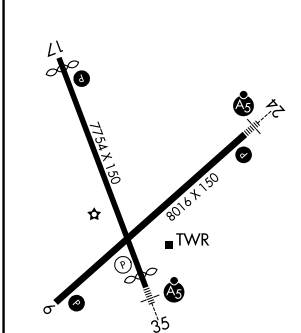
ALTERNATE MISSED APCH FIX

AIRLI
IL :::::
281

RNAV 1-GPS or RADAR REQUIRED



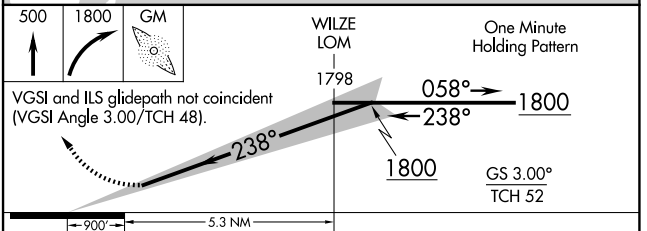
ELEV 32	D	TDZE 26
---------	----------	---------



HIRL Rwy 6-24 and 17-35 **①**
REIL Rwy 6 and 17 **①**

FAF to MAP 5.3 NM

Knots	60	90	120	150	180
Min:Sec	5:18	3:32	2:39	2:07	1:46



CATEGORY	A	B	C	D
S-ILS 24	SA CAT I RA 151/14 150 DA 176			
S-ILS 24	SA CAT II RA 108/12 100 DA 126			

SA CATEGORY I & II ILS SPECIAL AIRCREW & AIRCRAFT CERTIFICATION REQUIRED

SE-2, 16 APR 2026 to 14 MAY 2026

SE-2, 16 APR 2026 to 14 MAY 2026