

LOC I-GMX 111.55	APP CRS 238°	Rwy Ldg 8016 TDZE 26 Apt Elev 32
----------------------------	------------------------	---

ILS Y or LOC RWY 24

WILMINGTON INTL (ILM)

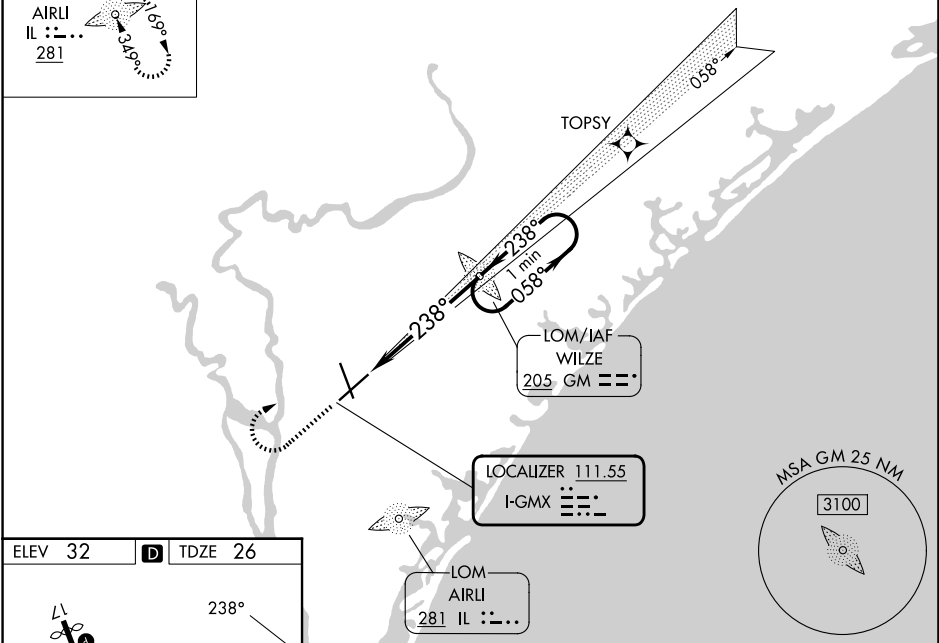
<p>**RVR 1800 authorized with use of FD or AP or HUD to DA. ADF required.</p>	<p>MALSR</p>	<p>MISSED APPROACH: Climb to 500 then climbing right turn to 1800 direct WILZE LOM and hold.</p>
--	--------------	--

<p>ATIS 124.975</p>	<p>WILMINGTON APP CON★ 118.25 284.65 (164°-343°) 135.75 317.425 (344°-163°)</p>	<p>WILMINGTON TOWER★ 119.9 (CTAF) 0 239.3</p>	<p>GND CON 121.9 348.6</p>	<p>UNICOM 122.95</p>
--------------------------------	---	---	---------------------------------------	---------------------------------

ALTERNATE MISSED APCH FIX

AIRLI
IL ::...
281

RNAV 1-GPS or RADAR REQUIRED



ELEV 32	D	TDZE 26
---------	----------	---------

HIRL Rwy 6-24 and 17-35

REIL Rwy 6 and 17

FAF to MAP 5.3 NM

Knots	60	90	120	150	180
Min:Sec	5:18	3:32	2:39	2:07	1:46

500	1800	GM	WILZE LOM	One Minute Holding Pattern
-----	------	----	-----------	----------------------------

VGSI and ILS glidepath not coincident (VGSI Angle 3.00/TCH 48).

1798

058° → 1800

← 238°

1800

GS 3.00° TCH 52

	A	B	C	D
S-ILS 24**	226/24		200 (200-½)	
S-LOC 24	500/24	474 (500-½)	500/50	474 (500-1)
CIRCLING	560-1	528 (600-1)	720-2 688 (700-2)	920-3 888 (900-3)

SE-2, 16 APR 2026 to 14 MAY 2026

SE-2, 16 APR 2026 to 14 MAY 2026