

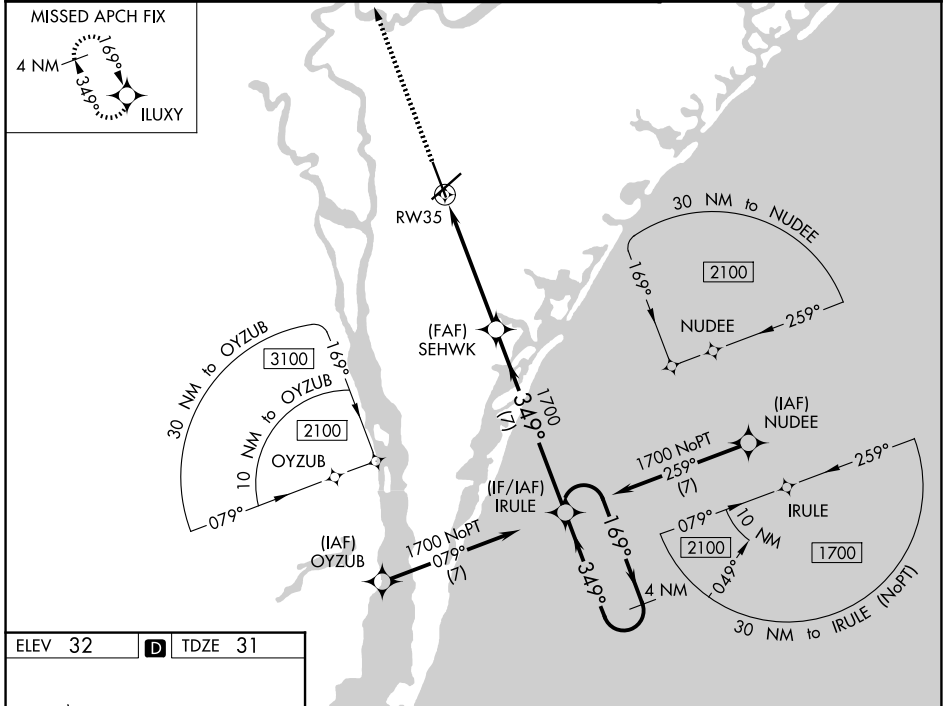
WAAS CH 50499 W35A	APP CRS 349°	Rwy Ldg 7204 TDZE 31 Apt Elev 32
--	------------------------	---

RNAV (GPS) RWY 35

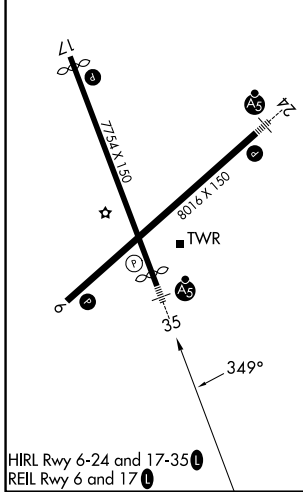
WILMINGTON INTL (ILM)

<p>⚠ For uncompensated Baro-VNAV systems, LNAV/VNAV NA below -7°C (20°F) or above 54°C (130°F). DME/DME RNP-0.3 NA. For inop ALS, increase LNAV Cats C/D visibility to 1½ SM.</p>	<p>MALSR</p>	<p>MISSED APPROACH: Climb to 3000 direct ILUXY and hold.</p>
--	--------------	--

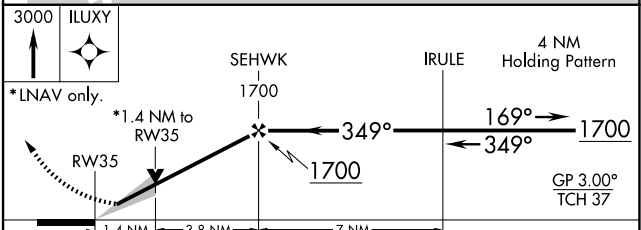
<p>ATIS 124.975</p>	<p>WILMINGTON APP CON★ 118.25 284.65 (164°-343°) 135.75 317.425 (344°-163°)</p>	<p>WILMINGTON TOWER★ 119.9 (CTAF) 0 239.3</p>	<p>GND CON 121.9 348.6</p>	<p>UNICOM 122.95</p>
--------------------------------	---	---	---------------------------------------	---------------------------------



ELEV 32	D	TDZE 31
---------	----------	---------



WILMINGTON, NORTH CAROLINA
Amdt 3C 17AUG17



CATEGORY	A	B	C	D
LPV DA		242/24	211 (300-½)	
LNAV/VNAV DA		426/45	395 (400-¾)	
LNAV MDA	500/24	469 (500-½)	500/50	469 (500-1)
CIRCLING	560-1	528 (600-1)	720-2 688 (700-2)	920-3 888 (900-3)

34°16'N-77°54'W

RNAV (GPS) RWY 35

SE-2, 16 APR 2026 to 14 MAY 2026

SE-2, 16 APR 2026 to 14 MAY 2026