

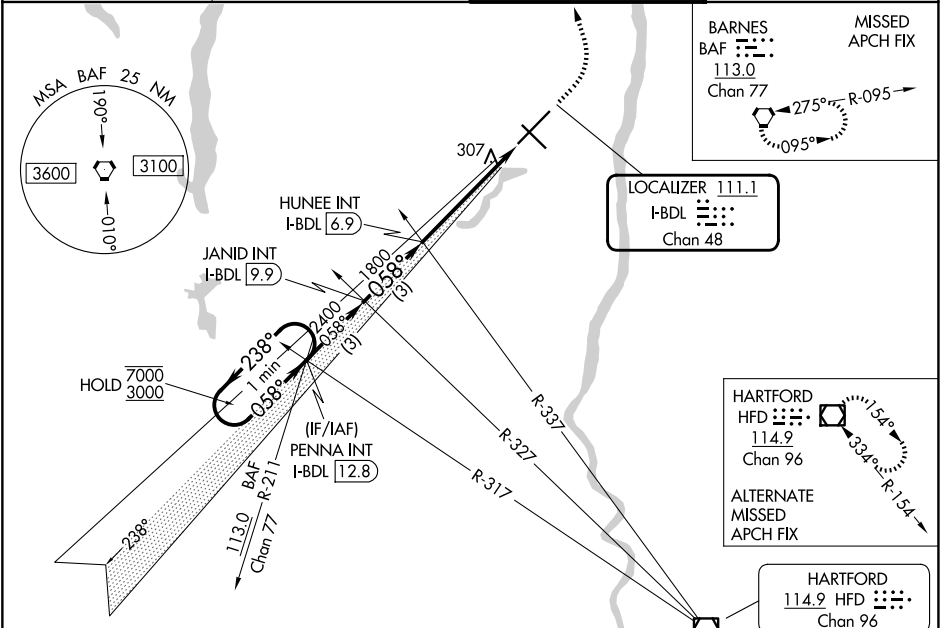
LOC/DME I-BDL <b>111.1</b> Chan <b>48</b>	APP CRS <b>058°</b>	Rwy Ldg TDZE <b>173</b> Apt Elev <b>173</b>	<b>9509</b>
---	------------------------	---	-------------

# ILS RWY 6 (SA CAT I)

BRADLEY INTL (BDL)

RADAR required for procedure entry. Requires specific OPSPEC, MSPEC or LOA approval and use of HUD to DH.		ALSIF-2 	MISSED APPROACH: Climb to 4000 then left turn direct BAF VORTAC and hold.
--	--	-------------	---

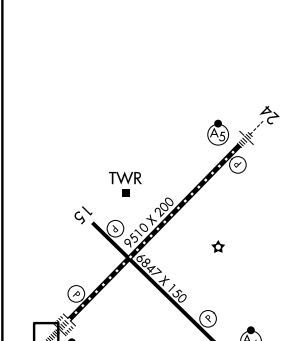
D-ATIS <b>118.15</b>	BRADLEY APP CON <b>123.95 290.55</b> (061°-240°) <b>125.35 281.5</b> (241°-060°)	BRADLEY TOWER <b>120.3 351.8</b>	GND CON <b>121.9 348.6</b>
-------------------------	--	-------------------------------------	-------------------------------



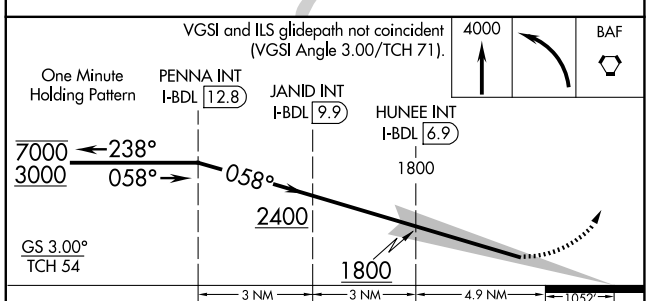
NE-1, 16 APR 2026 to 14 MAY 2026

NE-1, 16 APR 2026 to 14 MAY 2026

ELEV 173	<b>D</b>	TDZE 173
----------	----------	----------



REIL Rwy 15  
TDZL/RCLS Rwy 6 and 24  
HIRL Rwy 6-24 and 15-33



CATEGORY	A	B	C	D
S-ILS 6	RA 151/14 150 DA 323			

**SA CATEGORY I ILS-SPECIAL AIRCREW & AIRCRAFT CERTIFICATION REQUIRED**