

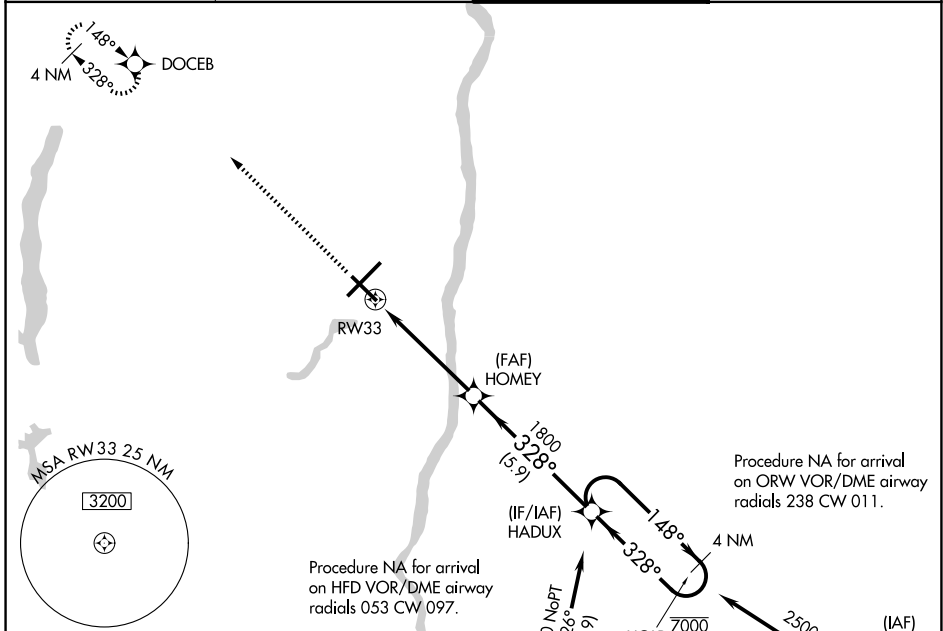
WAAS CH <b>65628</b> <b>W33A</b>	APP CRS <b>328°</b>	Rwy Ldg TDZE Apt Elev	<b>6847</b> <b>171</b> <b>173</b>
--	------------------------	-----------------------------	---

# RNAV (GPS) RWY 33

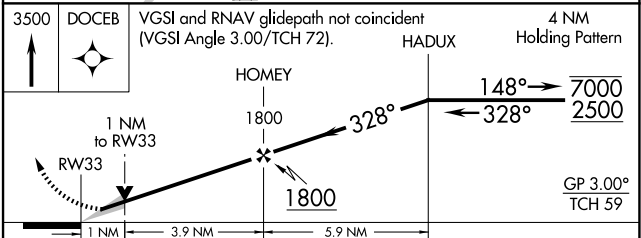
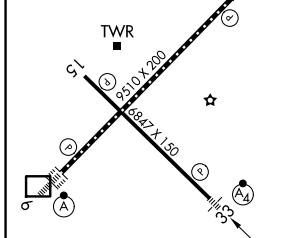
BRADLEY INTL (BDL)

RNP APCH - GPS.		MALSF 	MISSED APPROACH: Climb to 3500 direct DOCEB and hold, continue climb-in-hold to 3500.
		Inop table does not apply to LPV. For uncompensated Baro-VNAV systems, LNAV/VNAV NA below -17°C or above 54°C.	

D-ATIS <b>118.15</b>	BRADLEY APP CON <b>123.95 290.55</b> (061°-240°) <b>125.35 281.5</b> (241°-060°)	BRADLEY TOWER <b>120.3 351.8</b>	GND CON <b>121.9 348.6</b>
-------------------------	--	-------------------------------------	-------------------------------



ELEV 173	<b>D</b>	TDZE 171
----------	----------	----------



CATEGORY	A	B	C	D
LPV DA		371/40	200 (200-¾)	
LNAV/VNAV DA		463/40	292 (300-¾)	
LNAV MDA	560/40	389 (400-¾)	560/45	389 (400-7/8)
CIRCLING	700-1	527 (600-1)	1120-2¾ 947 (1000-2¾)	1220-3 1047 (1100-3)

REIL Rwy 15  
TDZL/RCLS Rwy 6 and 24  
HIRL Rwy 6-24 and 15-33

NE-1, 16 APR 2026 to 14 MAY 2026

NE-1, 16 APR 2026 to 14 MAY 2026