

APP CRS	Rwy Ldg	9509
058°	TDZE	173
	Apt Elev	173

RNAV (RNP) Z RWY 6

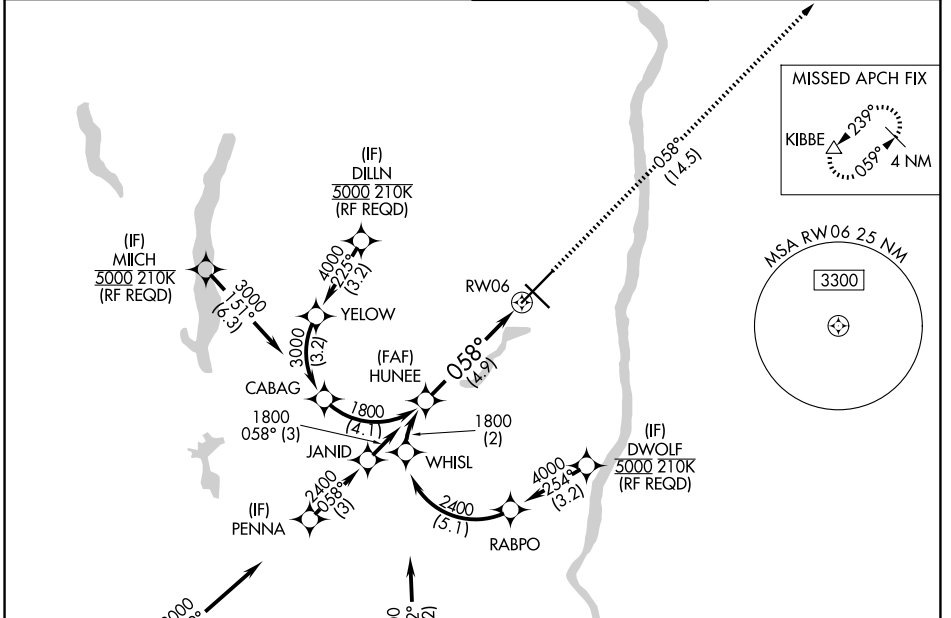
BRADLEY INTL (BDL)

▽ For uncompensated Baro-VNAV systems, procedure NA below -18°C (0°F) or above 54°C (130°F). GPS required. For inop ALS, increase RNP 0.11 all Cats visibility to RVR 5500 and RNP 0.30 all Cats visibility to 1 3/8 SM.

ALSF-2

MISSED APPROACH: Climb to 3000 on track 058° to KIBBE and hold.

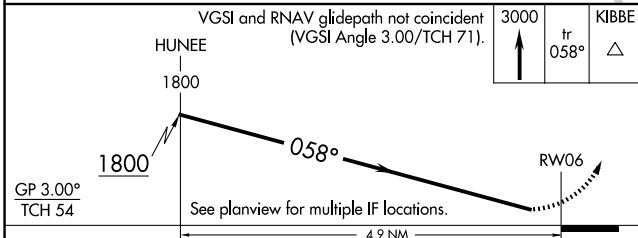
D-ATIS 118.15	BRADLEY APP CON 123.95 290.55 (061°-240°) 125.35 281.5 (241°-060°)	BRADLEY TOWER 120.3 351.8	GND CON 121.9 348.6
-------------------------	--	-------------------------------------	-------------------------------



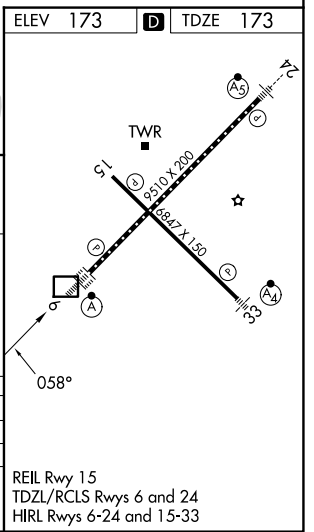
NE-1, 16 APR 2026 to 14 MAY 2026

NE-1, 16 APR 2026 to 14 MAY 2026

ELEV 173	D	TDZE 173
----------	----------	----------



CATEGORY	A	B	C	D
RNP 0.11 DA		545/40	372 (400-3/4)	
RNP 0.30 DA		672/50	499 (500-1)	



AUTHORIZATION REQUIRED