

WINK, TEXAS

AL-461 (FAA)

25051

VORTAC INK <b>112.1</b> Chan <b>58</b>	APP CRS <b>150°</b>	Rwy Idg TDZE Apt Elev	<b>5003</b> <b>2822</b> <b>2822</b>
--	------------------------	-----------------------------	---

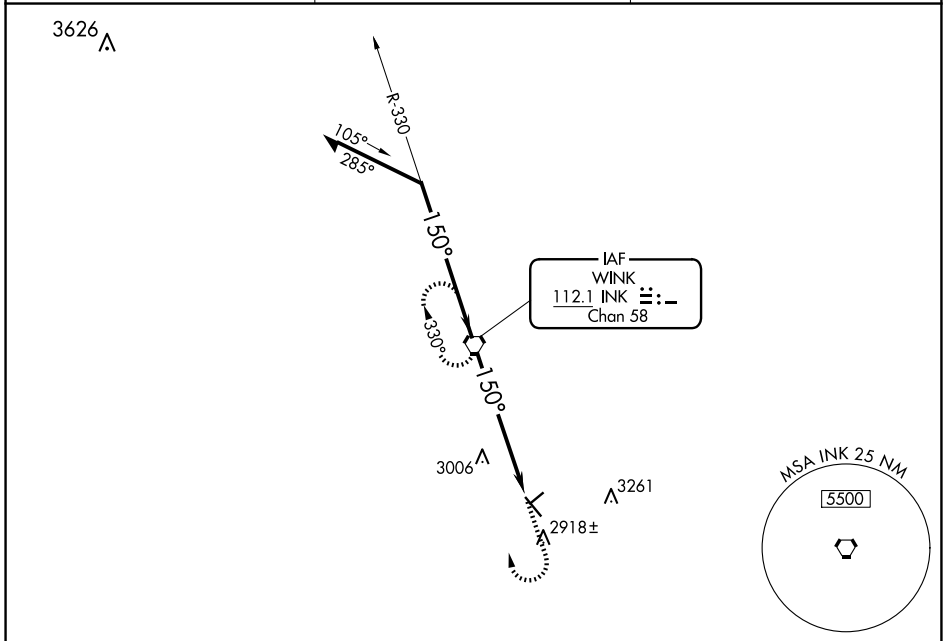
# VOR RWY 13

WINKLER COUNTY (INK)

**▲**  
**▲**

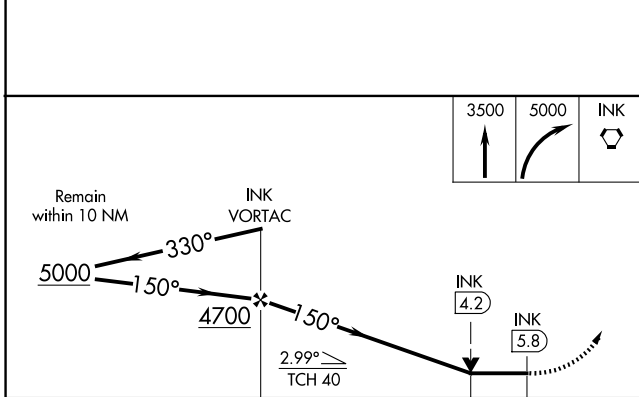
MISSED APPROACH: Climb to 3500 then climbing right turn to 5000 direct INK VORTAC and hold, continue climb-in-hold to 5000.

ASOS <b>118.325</b>	FORT WORTH CENTER <b>133.1 298.95</b>	UNICOM <b>123.0 (CTAF) 0</b>
------------------------	--	---------------------------------

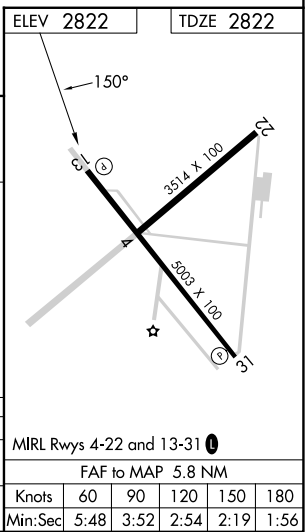


SC-3, 16 APR 2026 to 14 MAY 2026

SC-3, 16 APR 2026 to 14 MAY 2026



	Remain within 10 NM			
		INK VORTAC		
		5000	4700	518 (600-1%)
		330°	150°	150°
			2.99°	
			TCH 40	
			4.2 NM	1.6 NM
CATEGORY	A	B	C	D
S-13	3340-1	518 (600-1)	3340-1 1/8 518 (600-1 1/8%)	NA
<b>C</b> CIRCLING	3340-1	518 (600-1)	3580-2 1/4 758 (800-2 1/4%)	NA



WINK, TEXAS  
Amdt 10B 20FEB25

31°47'N-103°12'W

# WINKLER COUNTY (INK)

## VOR RWY 13