

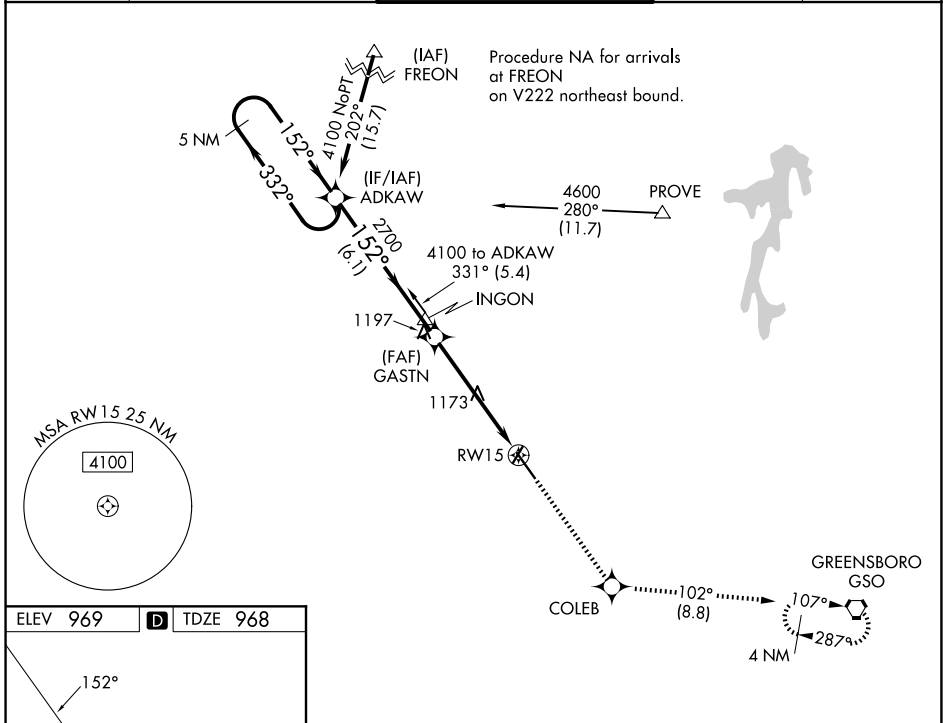
APP CRS	Rwy Ldg	6069
152°	TDZE	968
	Apt Elev	969

RNAV (GPS) RWY 15

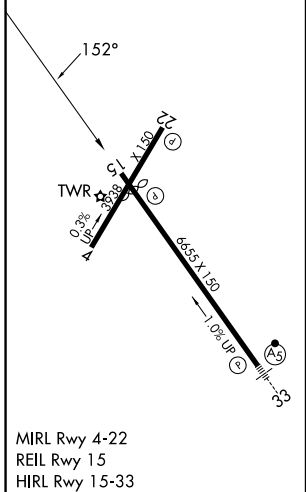
SMITH REYNOLDS (INT)

RNP APCH.		<p>When local altimeter setting not received, use Piedmont Triad Intl altimeter setting and increase all MDA 40 feet and Circling Cats C/D visibility ¼ SM. Circling Rwy 4, 22 NA at night. Rwy 15 helicopter visibility reduction below ¾ SM NA.</p>		<p>MISSED APPROACH: Climb to 3000 direct COLEB and on track 102° to GSO VORTAC and hold.</p>	
-----------	--	---	--	--	--

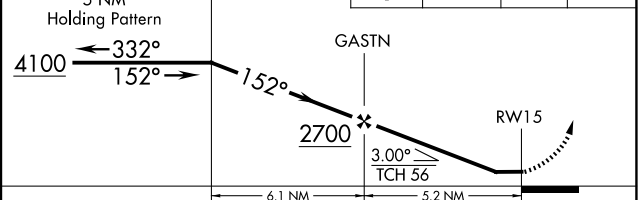
ATIS	GREENSBORO APP CON	WINSTON-SALEM TOWER ★	GND CON	UNICOM
121.3	124.35 269.225	123.75 (CTAF) 257.8	128.25	122.95



ELEV 969	D	TDZE 968
----------	----------	----------



VGSI and descent angles not coincident (VGSI Angle 3.00/TCH 38).	3000	COLEB	tr 102°	GSO
--	------	-------	---------	-----



CATEGORY	A	B	C	D
LNAV MDA	1440-1	472 (500-1)	1440-1½	472 (500-1½)
CIRCLING	1480-1 511 (600-1)	1580-1 611 (700-1)	1700-2 731 (800-2)	1760-2½ 791 (800-2½)

SE-2, 16 APR 2026 to 14 MAY 2026

SE-2, 16 APR 2026 to 14 MAY 2026