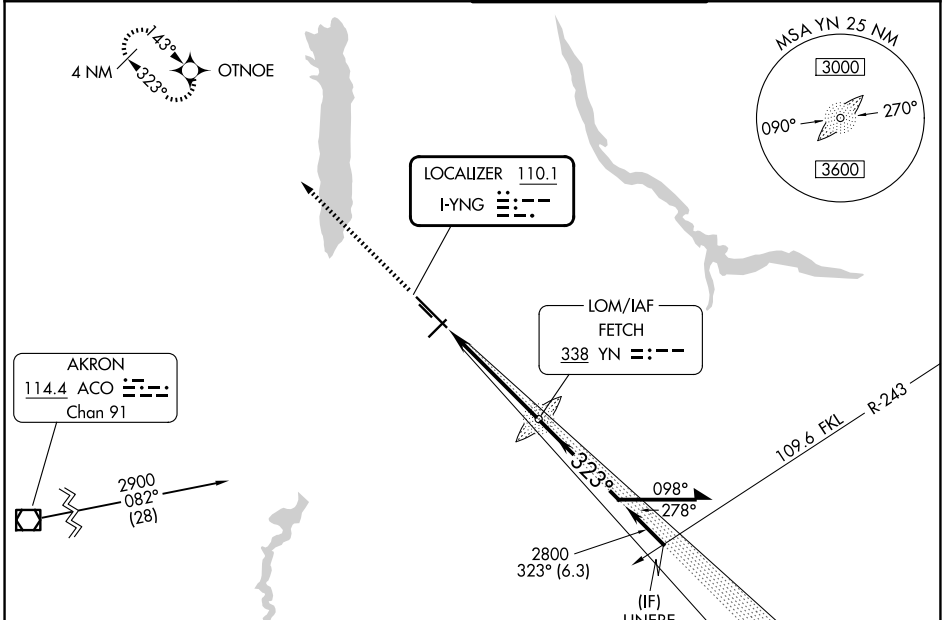


LOC I-YNG <b>110.1</b>	APP CRS <b>323°</b>	Rwy Ldg TDZE Apt Elev	<b>9003</b> <b>1186</b> <b>1192</b>
---------------------------	------------------------	-----------------------------	---

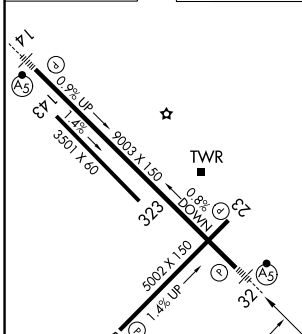
# ILS or LOC RWY 32

YOUNGSTOWN/WARREN RGNL (YNG)

RNP APCH - GPS.		MALS	MISSED APPROACH: Climb to 2900 direct OTNOE and hold.
ADF required.			
⚠️ Circling Rwy 5 and 23 NA at night. Operational VGSI required, remain on or above VGSI glidepath until threshold. Use of GS below 100' AGL NA.			
ATIS <b>123.75</b>	YOUNGSTOWN APP CON * <b>133.95 322.3</b>	YOUNGSTOWN TOWER <b>119.5 263.0</b>	GND CON <b>121.9 275.8</b>



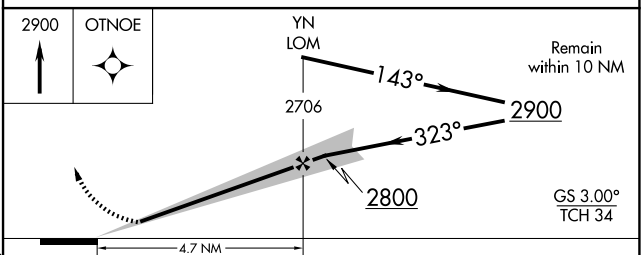
ELEV 1192	<b>D</b>	TDZE 1186
-----------	----------	-----------



HIRL Rwy 14-32  
MIRL Rwy 5-23  
REIL Rwys 5 and 23

FAF to MAP 4.7 NM

Knots	60	90	120	150	180
Min:Sec	4:42	3:08	2:21	1:53	1:34



CATEGORY	A	B	C	D
S-ILS 32	1436/24		250 (300-½)	
S-LOC 32	1640/24	454 (500-½)	1640/45	454 (500-¾)
CIRCLING	1640-1 448 (500-1)	1660-1 468 (500-1)	1740-1½ 548 (600-1½)	1760-2 568 (600-2)

EC-2, 16 APR 2026 to 14 MAY 2026

EC-2, 16 APR 2026 to 14 MAY 2026