

PERU, INDIANA

RNAV (GPS) RWY 23

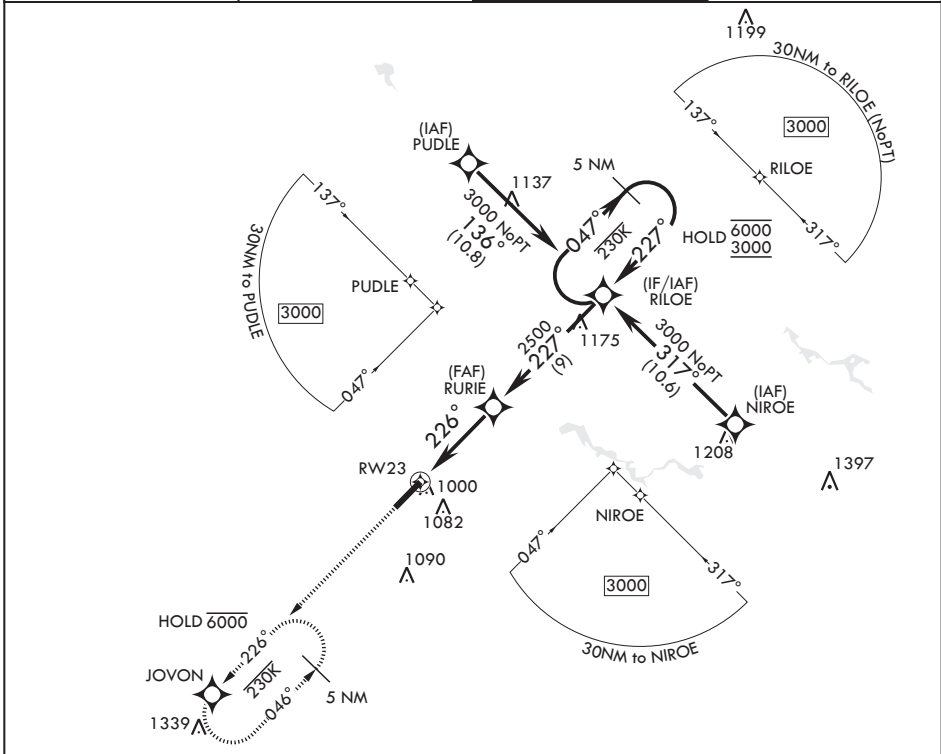
APCH CRS	Rwy Idg	12,501
226°	TDZE	799
	Arprt Elev	811

(USAF)

GRISSOM ARB (KGUS)

RNP APCH	ALSF-1	MISSED APPROACH: Climb to 3000 direct JOVON and hold.
* When ALS inop, increase CAT AB RVR to 55 and vis to 1 mile, CAT CDE vis to 1 3/8 miles.		

ATIS 132.55 270.8	APP CON/DEP CON 121.05 351.8 E 123.85 291.675 W	TOWER* 133.7 290.45	GND CON 128.425 275.8
----------------------	---	------------------------	--------------------------



EMERG SAFE ALT 100 NM 3500

3000	JOVON	5 NM Holding Pattern	ELEV 811	TDZE 799	
↑	⊙	RILOE 047° → 6000 / 3000	BCN 913 226°	⊙ (A1)	
		RURI 227° ← 2500	TWR 938	⊙ (P)	
		1.5 NM to RWY 23	12,501 x 200	⊙ (A1)	
		6 NM	≤ 2.59° TCH 51		
CATEGORY	A	B	C	D	E
LNAV MDA*	1260/24	461 (500-½)	1260/50	461	(500-1)
CIRCLING	1300-1	489 (500-1)	1400-1½ 589 (600-1½)	1400-2 589 (600-2)	1440-2¼ 629 (700-2¼)

HIRL all rwys

PERU, INDIANA

40°39'N - 86°09'W

GRISSOM ARB (KGUS)

Amdt 7 26DEC24

RNAV (GPS) RWY 23

EC-2, 16 APR 2026 to 14 MAY 2026

EC-2, 16 APR 2026 to 14 MAY 2026