

PERU, INDIANA

TACAN or VOR RWY 5

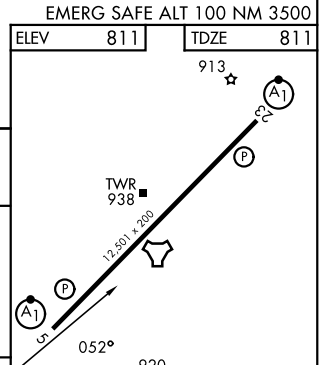
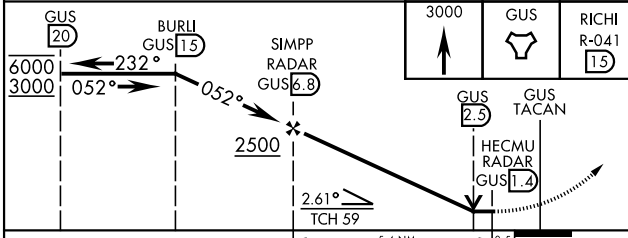
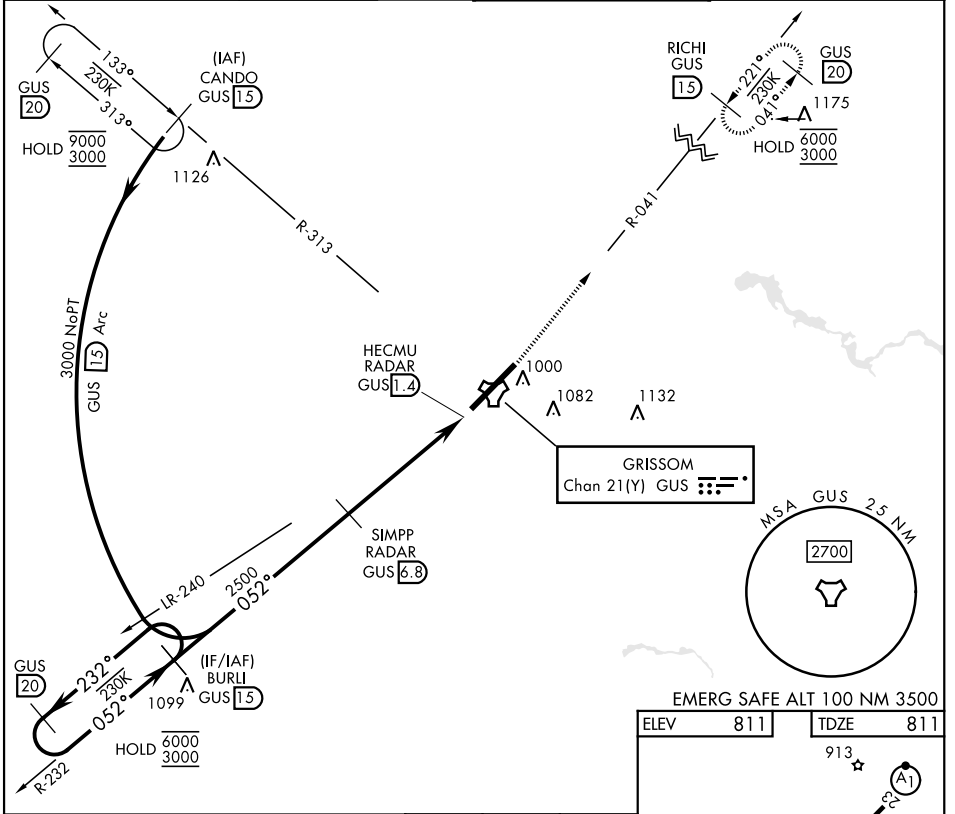
TACAN GUS Chan 21(Y)	APCH CRS 052°	Rwy Idg 12,501 TDZE 811 Arprt Elev 811
-----------------------------	----------------------	---

[USAF]

GRISSOM ARB (KGUS)

RADAR, DME required		ALSF-1	MISSED APPROACH: Climb to 3000 on the GUS TACAN R-041 to RICH and hold. Missed approach requires use of RNAV or ATC RADAR monitoring.
* When ALS inop, increase CAT AB RVR to 55 and vis to 1 mile; CAT CDE vis to 1 3/8 miles.			

ATIS 132.55 270.8	APP CON 121.05 351.8 (E) 123.85 291.675 (W)	TOWER ★ 133.7 290.45	GND CON 128.425 275.8
--------------------------	--	-----------------------------	------------------------------



CATEGORY	A	B	C	D	E
S-5 *	1280/24	469 (500-1/2)	1280/50	469	(500-1)
CIRCLING	1340-1	529 (600-1)	1400-1 1/2 589 (600-1 1/2)	1400-2 589 (600-2)	1440-2 1/4 629 (700-2 1/4)

FAF to MAP 5.4 NM					
Knots	60	90	120	150	180
Min:Sec	5:24	3:36	2:42	2:10	1:48

PERU, INDIANA

40°39'N-86°09'W

GRISSOM ARB (KGUS)

Amdt 9 14JUL22

TACAN or VOR RWY 5

EC-2, 16 APR 2026 to 14 MAY 2026

EC-2, 16 APR 2026 to 14 MAY 2026