

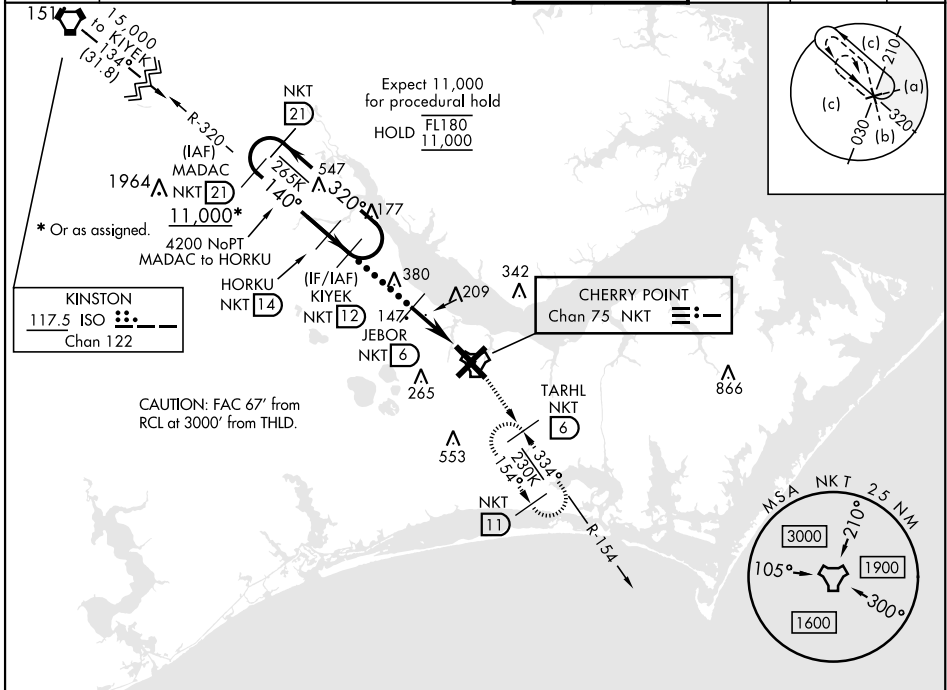
CHERRY POINT, NORTH CAROLINA

# HI-TACAN Y RWY 14L

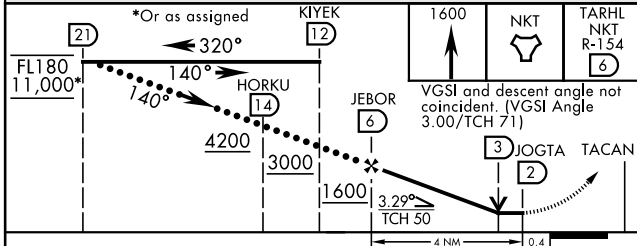
TACAN NKT Chan <b>75</b>	APCH CRS <b>140°</b>	Rwy ldg TDZE 8979 26 29	[USN]	CHERRY POINT MCAS (CUNNINGHAM FLD) (KNKT)
-----------------------------	-------------------------	----------------------------------	-------	---

**MISSED APPROACH:** Climb to 1600 to NKT TACAN and fly NKT R-154 to TARHL and hold.

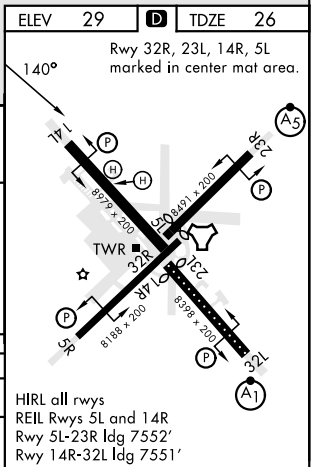
ATIS <b>127.475</b> <b>244.875</b>	APP CON <b>119.75</b> <b>360.775</b> (E) (abv 2600') <b>132.575</b> <b>299.6</b> (E) (at/blw 2600') <b>119.35</b> <b>377.175</b> (W) <b>124.1</b> <b>268.7</b> (N)	TOWER <b>121.3</b> <b>340.2</b>	GND CON <b>128.625</b> <b>239.025</b>	CLNC DEL <b>125.95</b> <b>316.125</b>	ASR/PAR
--	---	------------------------------------	---	---	---------



ELEV 29	TDZE 26
Rwy 32R, 23L, 14R, 5L marked in center mat area.	



CATEGORY	C	D	E
S-14L	500-1 $\frac{3}{8}$	474	(500-1 $\frac{3}{8}$ )
CIRCLING	580-1 $\frac{1}{2}$ 551 (600-1 $\frac{1}{2}$ )	580-2 551 (600-2)	700-2 $\frac{1}{2}$ 671 (700-2 $\frac{1}{2}$ )



CHERRY POINT, NORTH CAROLINA 34° 54' N-76° 53' W CHERRY POINT MCAS (CUNNINGHAM FLD) (KNKT)

Amdt 9 02NOV23

# HI-TACAN Y RWY 14L

SE-2, 16 APR 2026 to 14 MAY 2026

SE-2, 16 APR 2026 to 14 MAY 2026