

CHERRY POINT, NORTH CAROLINA

HI-TACAN Y RWY 32L

TACAN NKT Chan 75	APCH CRS 334°	Rwy Idg TDZE Arpt Elev 7551 26 29
-----------------------------	-------------------------	---

[UN]

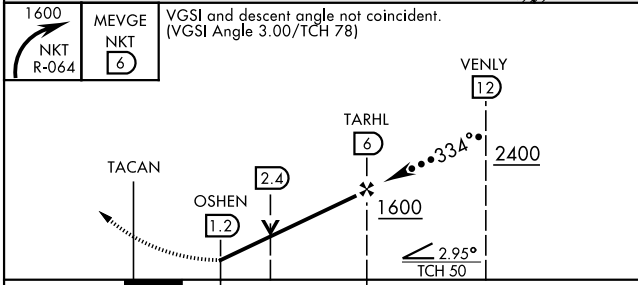
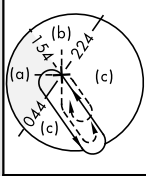
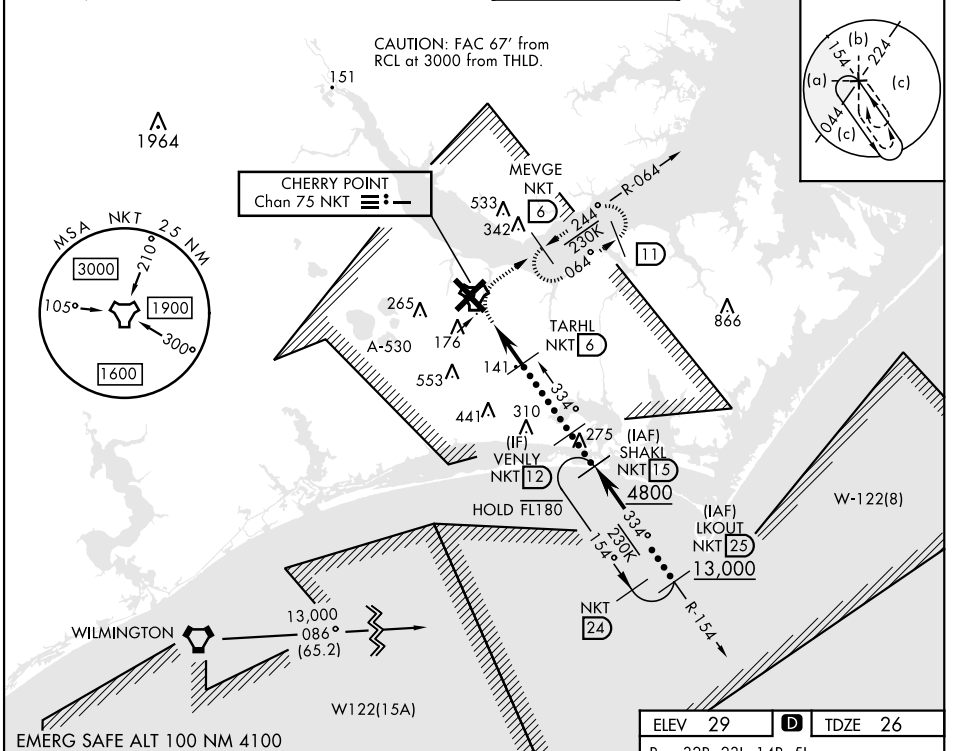
CHERRY POINT MCAS (CUNNINGHAM FLD) (KNKT)

▼ *When ALS inop, increase vis to 1 1/2 miles.

ALS F-1
A1

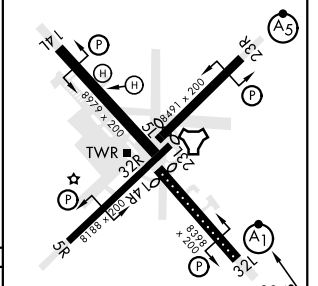
MISSED APPROACH: Climbing right turn to 1600, intercept NKT R-064 to MEVGE and hold.

ATIS 127.475 244.875	(E) 119.75 (E) 132.575 (W) 119.35	APP CON 360.775 (abv 2600') 299.6 (at/blw 2600') 377.175 (N) 124.1 268.7	TOWER 121.3 340.2	GND CON 128.625 239.025	CLNC DEL 125.95 316.125	ASR/ PAR
--	--	--	------------------------------------	---	---	-------------



ELEV 29	TDZE 26
---------	---------

Rwy 32R, 23L, 14R, 5L marked in center mat area.



CATEGORY	C	D	E
S-32L*	460-3/4	435 (500-3/4)	
CIRCLING	580-1 1/2	580-2	700-2 1/2
	551 (600-1 1/2)	551 (600-2)	671 (700-2 1/2)

HIRL all rwys
REIL Rwy 5L and 14R
Rwy 5L-23R Idg 7552'
Rwy 14R-32L Idg 7551'

CHERRY POINT, NORTH CAROLINA 34° 54' N-76° 53' W CHERRY POINT MCAS (CUNNINGHAM FLD) (KNKT)

Amtd 5 02NOV23

HI-TACAN Y RWY 32L

SE-2, 16 APR 2026 to 14 MAY 2026

SE-2, 16 APR 2026 to 14 MAY 2026