

ILS or LOC/DME RWY 23R

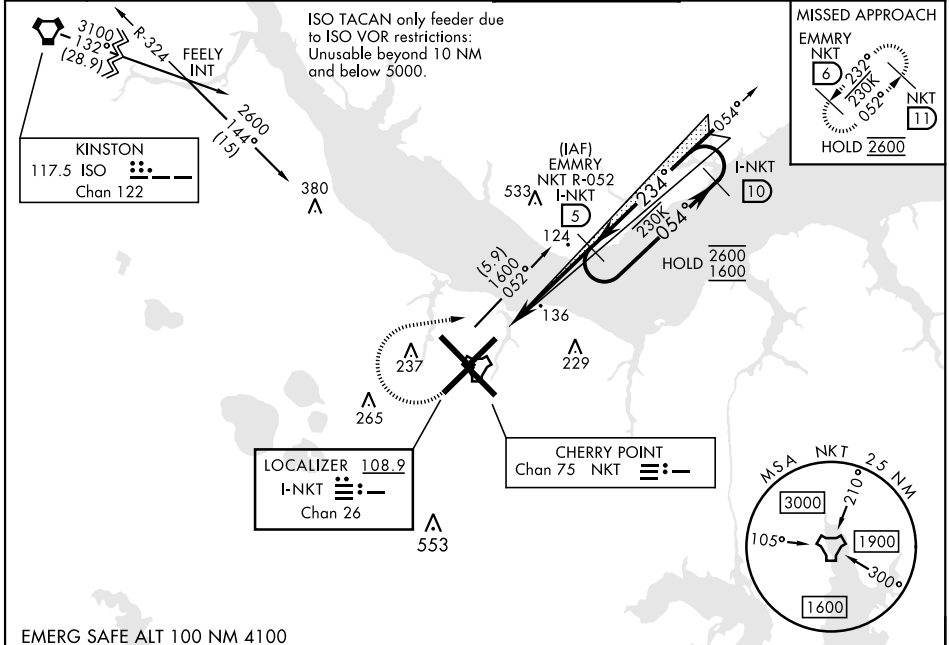
LOC/DME I-NKT 108.9 Chan 26	APCH CRS 234°	Rwy Idg TDZE 23 Arprt Elev 29	7552
---	-------------------------	---	-------------

[USN]

CHERRY POINT MCAS (CUNNINGHAM FLD) (KNKT)

TACAN required * When ALS inop, increase vis to ¾ mile. ** When ALS inop, increase vis to 1 mile.	MALSR 	MISSED APPROACH: Climb to 500, then climbing right turn to 2600 via NKT TACAN R-052 to EMMRY and hold. Continue climb in hold to 2600.
---	-----------	--

ATIS 127.475 244.875	(E) 119.75 (E) 132.575 (W) 119.35	APP CON 360.775 (abv 2600') 299.6 (at/blw 2600') 377.175 (N) 124.1 268.7	TOWER 121.3 340.2	GND CON 128.625 239.025	CLNC DEL 125.95 316.125	ASR/PAR
--	--	---	-----------------------------	---	---	---------

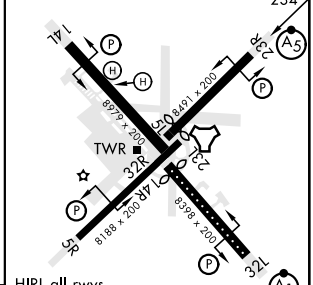
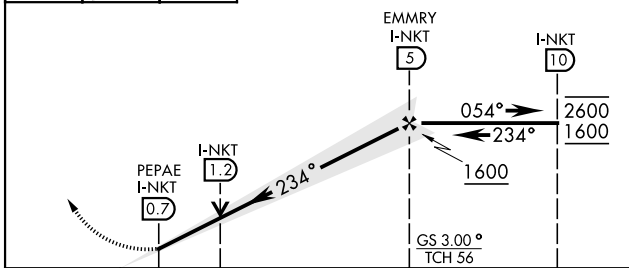


EMERG SAFE ALT 100 NM 4100

500	2600	EMMRY NKT 6	VGSI and ILS glidepath not coincident (VGSI Angle 3.00/TCH 53).
-----	------	--------------------	---

ELEV 29	TDZE 23
---------	---------

Rwy 32R, 23L, 14R, 5L marked in center mat area.



HIRL all rwys REIL Rwy 5L and 14R Rwy 5L-23R Idg 7552' Rwy 14R-32L Idg 7551'	FAF to MAP 4.3 NM					
	Knots	60	90	120	150	180
	Min:Sec	4:18	2:52	2:09	1:43	1:26

CHERRY POINT, NORTH CAROLINA 34° 54' N-76° 53' W CHERRY POINT MCAS (CUNNINGHAM FLD) (KNKT)

Amtd 1 02NOV23

ILS or LOC/DME RWY 23R

SE-2, 16 APR 2026 to 14 MAY 2026

SE-2, 16 APR 2026 to 14 MAY 2026