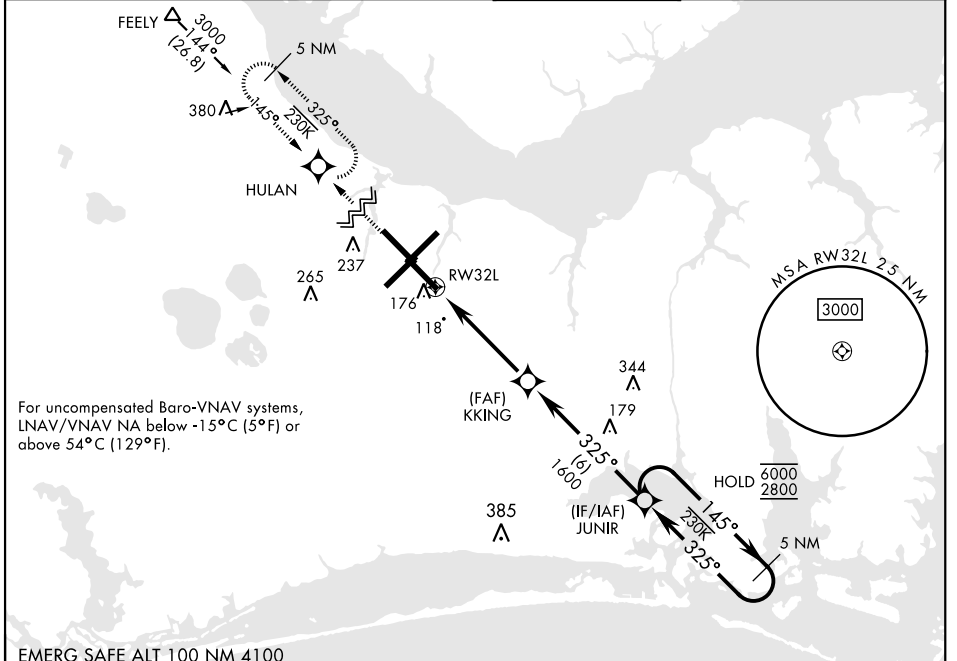


RNAV (GPS) RWY 32L

WAAS Chan 54304 W32A	APCH CRS 325°	Rwy ldg TDZE Arprt Elev 7551 26 29
--	-------------------------	--

[USN] CHERRY POINT MCAS (CUNNINGHAM FLD) (KNKT)

RNP APCH ▼ *When ALS inop, increase vis to ¾ mile. ***When ALS inop, increase vis to 1 mile. CAT CD vis to 1¼ miles.		ALSIF-1 	MISSED APPROACH: Climb to 600 then climbing right turn to 2800 direct HULAN and hold.			
ATIS 127.475 244.875	(E) 119.75 (E) 132.575 (W) 119.35	APP CON 360.775 (abv 2600') 299.6 (at/blw 2600') 377.175 (N) 268.7	TOWER 121.3 340.2	GND CON 128.625 239.025	CLNC DEL 125.95 316.125	ASR/PAR



For uncompensated Baro-VNAV systems, LNAV/VNAV NA below -15°C (5°F) or above 54°C (129°F).

EMERG SAFE ALT 100 NM 4100

600	2800	HULAN	VGSI and RNAV glidepath not coincident. (VGSI Angle 3.00/TCH 78)	
			5 NM Holding Pattern	
		KKKING	JUNIR	325° 6000 145° 2800 GP 3.04° TCH 50
CATEGORY	A	B	C	D
LPV DA*	225-½		200	(200-½)
LNAV/ VNAV DA**	400-¾		375	(400-¾)
LNAV MDA***	460-½	435 (500-½)	460-¾	435 (500-¾)
CIRCLING	580-1	551 (600-1)	580-1½	580-2 551 (600-1½)

ELEV 29		TDZE 26
---------	--	---------

Rwy 32R, 23L, 14R, 5L marked in center mat area.

HIRL all rwys
 REIL Rwy 5L and 14R
 Rwy 5L-23R ldg 7552'
 Rwy 14R-32L ldg 7551'

RNAV (GPS) RWY 32L

SE-2, 16 APR 2026 to 14 MAY 2026

SE-2, 16 APR 2026 to 14 MAY 2026