

CHERRY POINT, NORTH CAROLINA

RNAV (GPS) RWY 5R

WAAS Chan 71199 W05A	APCH CRS 054°	Rwy Idg TDZE Arprt Elev 8188 27 29
--	-------------------------	--

[USN]

CHERRY POINT MCAS (CUNNINGHAM FLD) (KNKT)

RNP APCH

▼ For uncompensated Baro-VNAV systems, LNAV/VNAV NA below -15°C (5°F) or above 54°C (129°F).

MISSED APPROACH: Climb to 600, then climbing left turn to 2600 direct EMMRY and hold. Continue climb in hold to 2600.

ATIS 127.475 244.875	APP CON (E) 119.75 360.775 (abv 2600') (E) 132.575 299.6 (at/blw 2600') (W) 119.35 377.175 (N) 124.1 268.7	TOWER 121.3 340.2	GND CON 128.625 239.025	CLNC DEL 125.95 316.125	ASR/ PAR
--	---	------------------------------------	---	---	-------------



SE-2, 16 APR 2026 to 14 MAY 2026

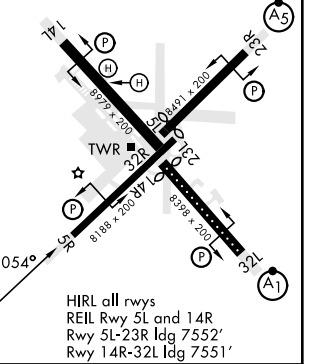
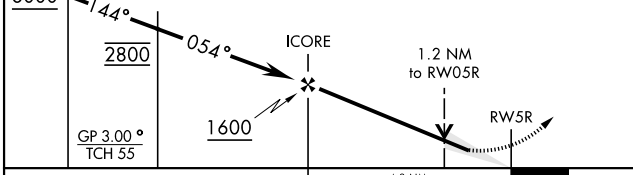
SE-2, 16 APR 2026 to 14 MAY 2026

EMERG SAFE ALT 100 NM 4100

OSPIE 3000	WEDUV 2800	ICORE	RW05R	600	2600	EMMRY
				<p>VGSI and RNAV glidepath not coincident (VGSI Angle 3.00/TCH 73).</p>		

ELEV	29	TDZE	27
------	----	------	----

Rwy 32R, 23L, 14R, 5L marked in center mat area.



CATEGORY	A	B	C	D
LPV DA		226-¾	200	(200-¾)
LNAV/VNAV DA		398-1	372	(400-1)
LNAV MDA	480-1	454 (500-1)	480-1¾	454 (500-1¾)
CIRCLING	580-1	551 (600-1)	580-1½ 551 (600-1½)	580-2 551 (600-2)

CHERRY POINT, NORTH CAROLINA
Amdt 6 02NOV23

34° 54' N - 76° 53' W

CHERRY POINT MCAS (CUNNINGHAM FLD) (KNKT)

RNAV (GPS) RWY 5R