

RNAV (GPS) RWY 30

WAAS CH 70955 W30A	APCH CRS 304°	Rwy Idg TDZE Arprt Elev 6825 -42 -42
--	-------------------------	--

[USN]

EL CENTRO NAF (VRACIU FLD) (KNJK)

RNP APCH

MISSED APPROACH: Climb to 500, then climbing left turn to 2300 direct BEENY and hold.

*Not authorized at night.
Visibility reduction by helicopters NA.

ATIS ★
269.275

APP CON
132.275 292.2

TOWER ★
119.1 360.2

GND CON
121.9 254.35

For uncompensated Baro-VNAV system
LNAV/VNAV NA below -14°C (7°F) or
above 54°C (129°F).

CAUTION:
Extensive civil aircraft operations
at Imperial County airport.

20:1 visual area penetrated by
fence, lit, 289' from thld, 213'
right of course, 8 AGL/-34 MSL;
199' from thld, 305' right of
course, 8 AGL/-34 MSL; 504'
from thld, 3' right of course,
8 AGL/-34 MSL.

NOTE: Aircraft inbound from East use
ARGUS straight-in. Aircraft inbound
from West use BEENY, requires
holding.

R-2510

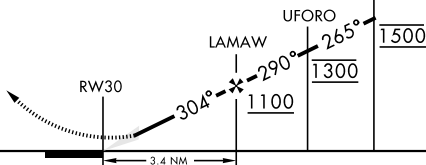
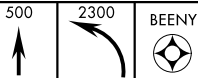
CAUTION: Missed Approach
max 250 KIAS until 500.

IMPERIAL
COUNTY

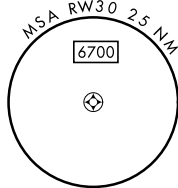
UNITED STATES
MEXICO

CAUTION:
Do not overfly the US-Mexican border.

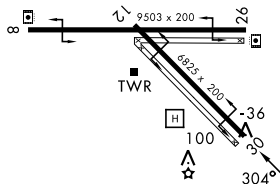
EMERG SAFE ALT 100 NM 17,000



GP 3.00°
TCH 55'



ELEV -42 TDZE -42



CATEGORY	A	B	C	D
LPV DA*	208-1		250	(300-1)
LNAV/VNAV DA*	231-1 273 (300-1)	242-1 284 (300-1)	250-1 292 (300-1)	261-1 303 (400-1)
LNAV MDA*	360-1	402 (500-1)	360-1½	402 (500-1½)
CIRCLING	480-1	522 (600-1)	480-1½	520-2 522 (600-1½)

HIRL Rwy 8-26, 12-30

RNAV (GPS) RWY 30

SW-3, 16 APR 2026 to 14 MAY 2026

SW-3, 16 APR 2026 to 14 MAY 2026