

EL CENTRO, CALIFORNIA

RNAV (GPS) RWY 8

WAAS CH 89932 W08A	APCH CRS 079°	Rwy ldg TDZE Arprt Elev	9503 -46 -42
---------------------------------	-------------------------	-------------------------------	---

(USN)

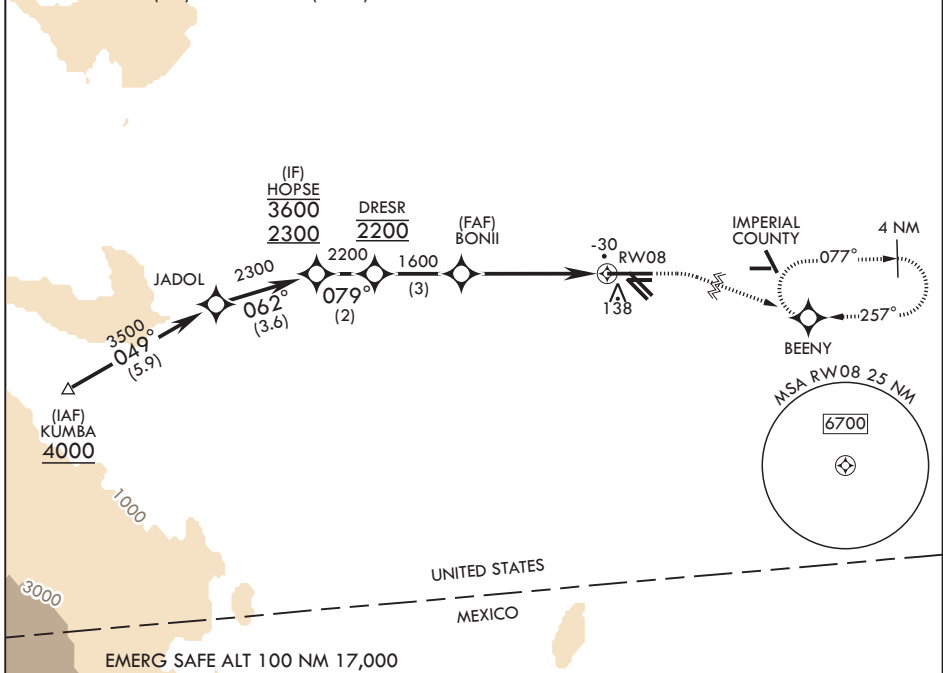
EL CENTRO NAF (VRACIU FLD) (KNJK)

RNP APCH	MISSED APPROACH: Climb to 800, then climbing right turn to 2400 direct BEENY and hold.
<p>⚠ Circling visibility reduction by helicopters NA. When tower closed, increase visibility to 1 mile.</p>	

ATIS* 269.275	APP CON/DEP CON 132.275 292.2	TOWER* 119.1 360.2	GND CON 121.9 254.35
-------------------------	---	------------------------------	--------------------------------

Circling to Rwy 30 NA at night.

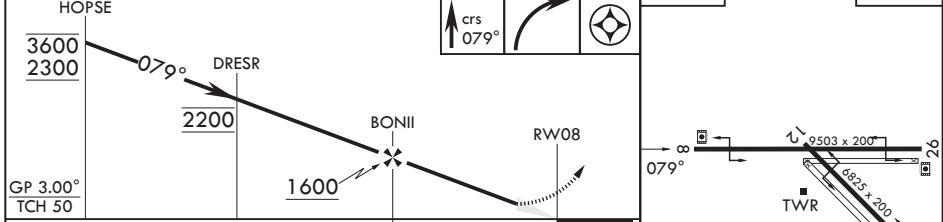
For uncompensated Baro-VNAV systems, LNAV/VNAV NA below -14°C (7°F) or above 54°C (129°F).



SW-3, 16 APR 2026 to 14 MAY 2026

SW-3, 16 APR 2026 to 14 MAY 2026

EMERG SAFE ALT 100 NM 17,000



CATEGORY	A		B		C		D	
LPV DA	204-3/4		250		(300-3/4)			
LNAV/VNAV DA	204-3/4	235-7/8	281 (300-7/8)	249-7/8	268-7/8	295 (300-7/8)	314 (400-7/8)	
LNAV MDA	460-1	506	(600-1)	460-1 3/8	506	(600-1 3/8)		
CIRCLING	480-1	522	(600-1)	480-1 1/2	522	(600-1 1/2)	562 (600-2)	

HIRL Rwy 8-26 and 12-30

EL CENTRO, CALIFORNIA
Orig 13JUL23

32°50'N - 115°40'W

EL CENTRO NAF (VRACIU FLD) (KNJK)

RNAV (GPS) RWY 8