

# TACAN RWY 26

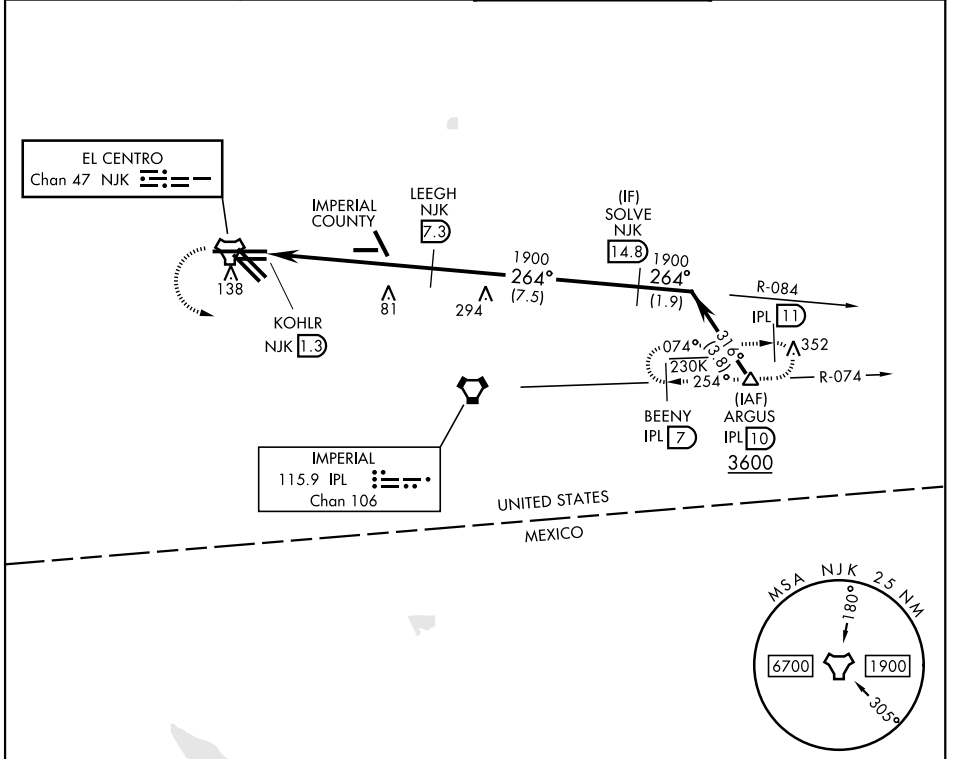
TACAN Chan	NJK 47	APCH CRS	264°	Rwy Idg TDZE	9503 -46
				Arpt Elev	-42

[USN]

EL CENTRO NAF (VRACIU FLD) (KNJK)

▼ Circling to Rwy 30 not authorized at night.
 MISSED APPROACH: Climb to 500, then climbing left turn to 2400 direct IPL VORTAC. Then direct BEENY via IPL R-074 and hold.

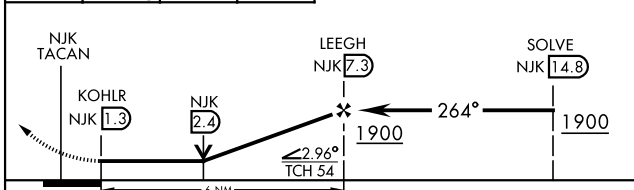
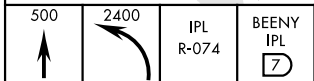
<b>ATIS ★</b> <b>269.275</b>	<b>APP CON</b> <b>132.275 292.2</b>	<b>TOWER ★</b> <b>119.1 360.2</b>	<b>GND CON</b> <b>121.9 254.35</b>
---------------------------------	--	--------------------------------------	---------------------------------------



SW-3, 16 APR 2026 to 14 MAY 2026

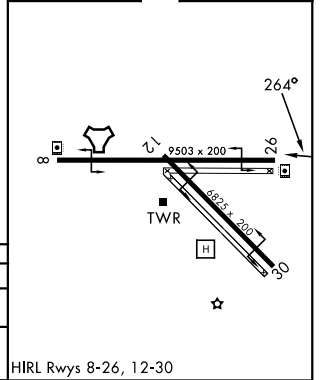
SW-3, 16 APR 2026 to 14 MAY 2026

EMERG SAFE ALT 100 NM 17,000



CATEGORY	A	B	C	D
S-26	380-1 426 (500-1)		380-1¼ 426 (500-1¼)	
CIRCLING	480-1 522 (600-1)		480-1½ 522 (600-1½)	520-2 562 (600-2)

ELEV	-42	TDZE	-46
------	-----	------	-----



# TACAN RWY 26

HIRL Rwy 8-26, 12-30