

EL CENTRO, CALIFORNIA

# VOR/DME RWY 30

VORTAC IPL <b>115.9</b> Chan <b>106</b>	APCH CRS <b>284°</b>	Rwy Ildg TDZE <b>6825</b> <b>-42</b> Arprt Elev <b>-42</b>
---	-------------------------	---

[USN]

EL CENTRO NAF (VRACIU FLD) (KNJK)

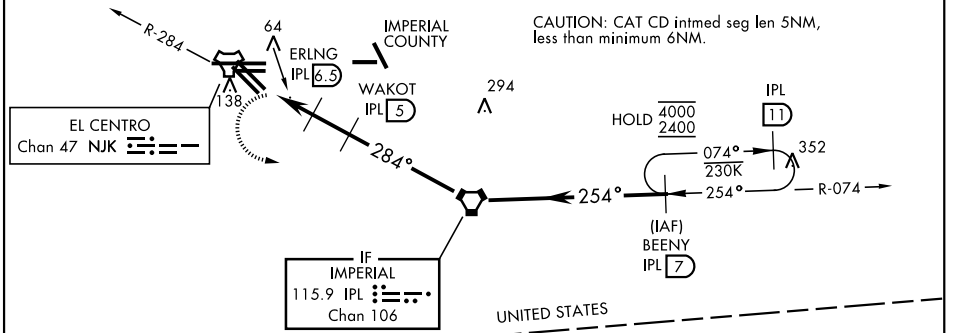
▼ Visibility reduction by helicopters not authorized. Procedure not authorized at night. MISSED APPROACH: Climb to 600, then climbing left turn to 2400, intercept IPL VORTAC R-074 to BEENY and hold.

ATIS ★ <b>269.275</b>	APP CON <b>132.275 292.2</b>	TOWER ★ <b>119.1 360.2</b>	GND CON <b>121.9 254.35</b>
--------------------------	---------------------------------	-------------------------------	--------------------------------

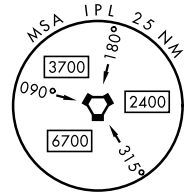
Rwy 30: 20:1 visual area penetrated by Fence, lit, 289 ft from thld, 213 ft right of course, 8 AGL/-34 MSL  
Fence, 199 ft from thld, 305 ft right of course, 8 AGL/-34 MSL  
Fence, 504 ft from thld, 3 ft right of course, 8 AGL/-34 MSL

CAUTION: Extensive civil aircraft operations at Imperial County airport.

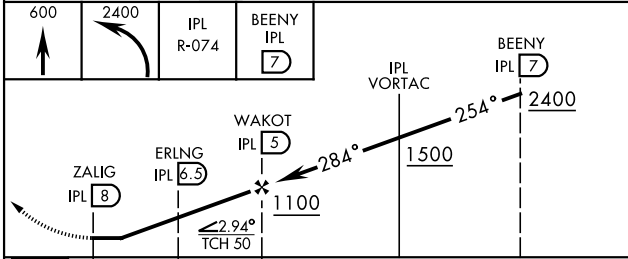
CAUTION: CAT CD intmed seg len 5NM, less than minimum 6NM.



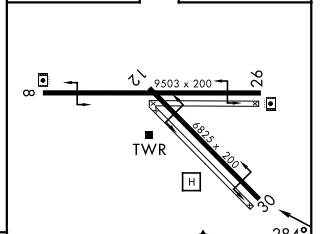
CAUTION: Do not overfly the US-Mexican border.



EMERG SAFE ALT 100 NM 17,000 from NJK TACAN



ELEV -42	TDZE -42
----------	----------



CATEGORY	A	B	C	D
S-30	380-1 422 (500-1)	380-1¼ 422 (500-1¼)		
CIRCLING	480-1 522 (600-1)	480-1½ 522 (600-1½)	520-2 562 (600-2)	

HIRL Rwys 8-26, 12-30

EL CENTRO, CALIFORNIA  
Amdt 5 13JUL23

32°50'N-115°40'W

EL CENTRO NAF (VRACIU FLD) (KNJK)

# VOR/DME RWY 30

SW-3, 16 APR 2026 to 14 MAY 2026

SW-3, 16 APR 2026 to 14 MAY 2026