

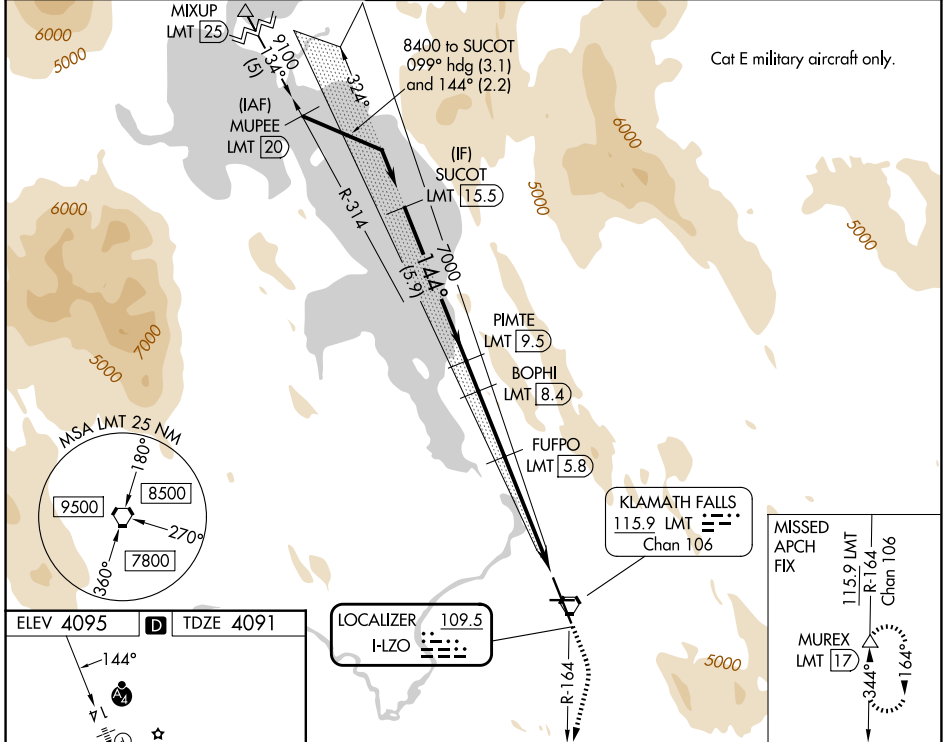
LOC I-LZO 109.5	APP CRS 144°	Rwy Ldg 10302 TDZE 4091 Apt Elev 4095
---------------------------	------------------------	--

ILS or LOC RWY 14

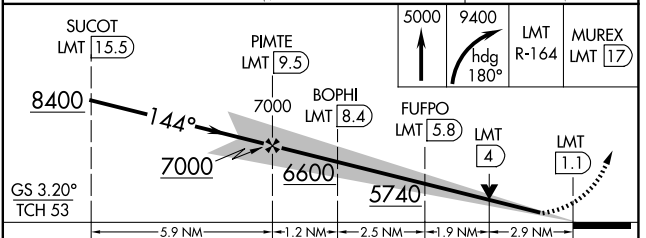
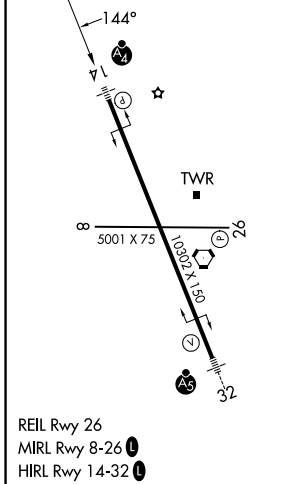
CRATER LAKE/KLAMATH RGNL (LMT)

DME required.	MAISF 	MISSED APPROACH: Climb to 5000, then climbing right turn to 9400 on heading 180° and LMT VORTAC R-164 to MUREX/LMT 17 DME and hold, continue climb-in-hold to 9400.
<p>⚠ Circling NA for Cats D and E northeast of Rwy 14-32. DME from LMT VORTAC. Simultaneous reception of I-LZO and LMT DME required.</p> <p>For inop ALS, increase S-ILS 14 call Cats visibility to 1/8 SM and increase S-LOC 14 Cats C/D/E visibility to 3 SM.</p>		

ATIS 126.5 263.0	KINGSLEY APP CON* 123.675 270.8	KINGSLEY TOWER* 133.975 (CTAF) 257.8	GND CON 121.9 348.6	UNICOM 122.95
----------------------------	---	--	-------------------------------	-------------------------



ELEV 4095	D	TDZE 4091
-----------	---	-----------



CATEGORY	A	B	C	D	E
S-ILS 14	4744-1 3/8 653 (700-1 3/8)				
S-LOC 14	5120-1 1029 (1100-1)	5120-1 1/4 1029 (1100-1 1/4)	5120-2 1/2 1029 (1100-2 1/2)		
CIRCLING	5120-1 1/4 1025 (1100-1 1/4)	5120-1 1/2 1025 (1100-1 1/2)	5420-3 1325 (1400-3)	5680-3 1585 (1600-3)	5700-3 1605 (1700-3)

NW-1, 16 APR 2026 to 14 MAY 2026

NW-1, 16 APR 2026 to 14 MAY 2026