

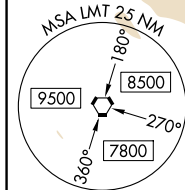
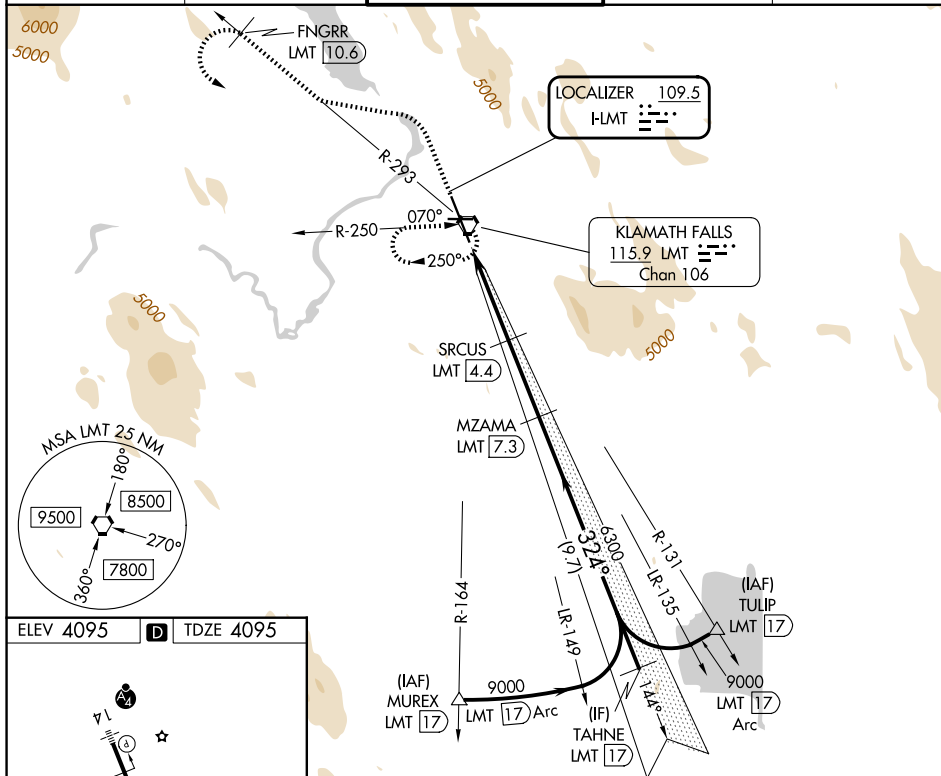
LOC I-LMT	APP CRS	Rwy Ldg	10302
109.5	324°	TDZE	4095
		Apt Elev	4095

ILS Y or LOC Y RWY 32

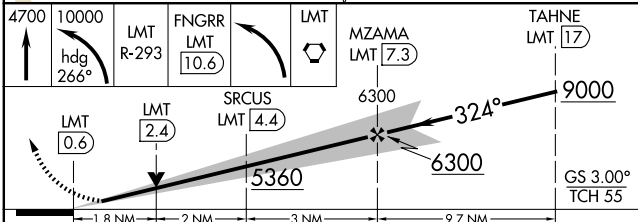
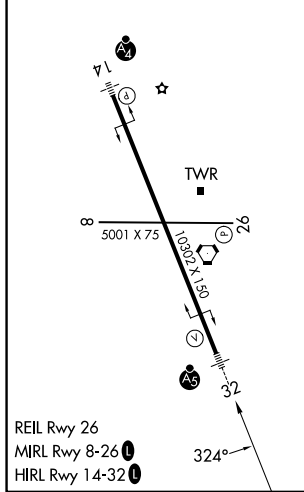
CRATER LAKE/KLAMATH RGNL (LMT)

DME required.	MALSR	MISSED APPROACH: Climb to 4700 then climbing left turn to 10000 on heading 266° and on LMT VORTAC R-293 to FNGRR/LMT 10.6 DME then left turn direct LMT VORTAC and hold, continue climb-in-hold to 10000.
<p>⚠ Circling NA for Cat D northeast of Rwy 14-32. When local altimeter setting not received, procedure NA. DME from LMT VORTAC.</p> <p>⚠ Simultaneous reception of I-LMT and LMT DME required. For inop ALS, increase LOC Cats C/D visibility to 1 3/4 SM.</p>		

ATIS	KINGSLEY APP CON*	KINGSLEY TOWER*	GND CON	UNICOM
126.5 263.0	123.675 270.8	133.975 (CTAF) 257.8	121.9 348.6	122.95



ELEV 4095	D	TDZE 4095
-----------	----------	-----------



CATEGORY	A	B	C	D
S-ILS 32	4315/24 220 (300-1/2)			
S-LOC 32	4720/24	625 (700-1/2)	4720-1 3/8	625 (700-1 1/8)
CIRCLING	4840-1	4980-1 1/4	5420-3	5680-3
	745 (800-1)	885 (900-1 1/4)	1325 (1400-3)	1585 (1600-3)

NW-1, 16 APR 2026 to 14 MAY 2026

NW-1, 16 APR 2026 to 14 MAY 2026