

APP CRS	Rwy Ldg	<b>7704</b>
<b>121°</b>	TDZE	<b>401</b>
	Apt Elev	<b>410</b>

# RNAV (RNP) Z RWY 12

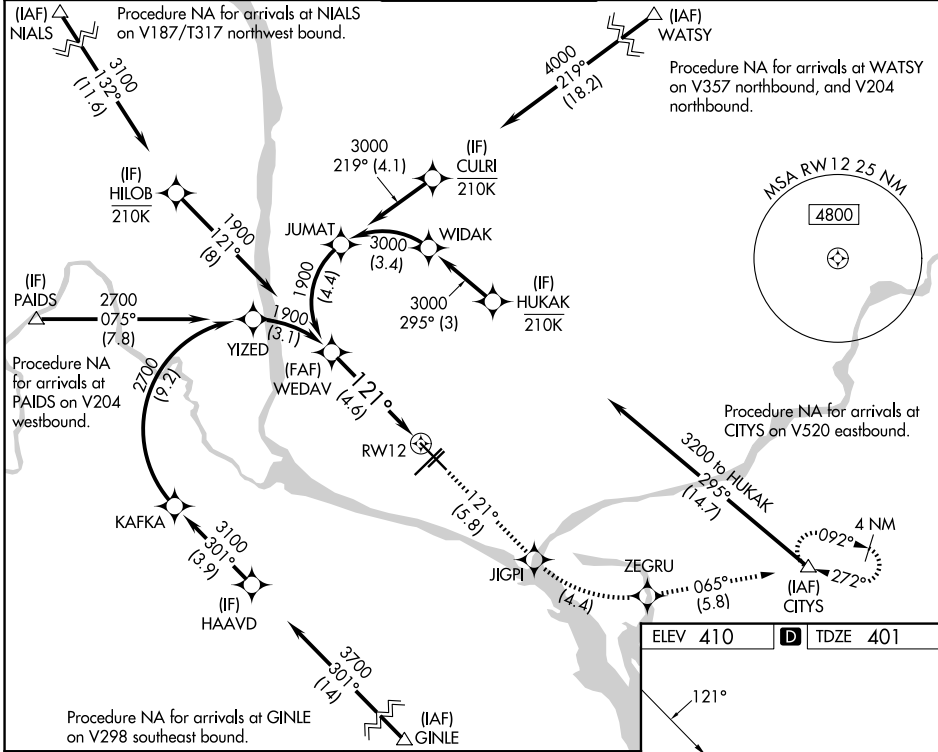
TRI-CITIES (PSC)

RNP AR APCH - GPS, RF. Authorization required. From JUMAT, HUKAK, YIZED: min RNP 0.50.

MISSED APPROACH: Climb to 3200 on track 121° to JIGPI, left turn to ZEGRU, and on track 065° to CITYS and hold.

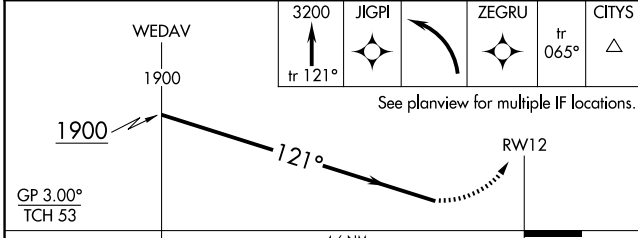
For uncompensated Baro-VNAV systems, procedure NA below -1.4°C or above 54°C.

ATIS <b>125.65</b>	SPOKANE APP CON * <b>128.75 377.2</b>	TRI-CITIES TOWER * <b>135.3 (CTAF) 285.55</b>	GND CON <b>121.8</b>	UNICOM <b>122.95</b>
-----------------------	--	--	-------------------------	-------------------------

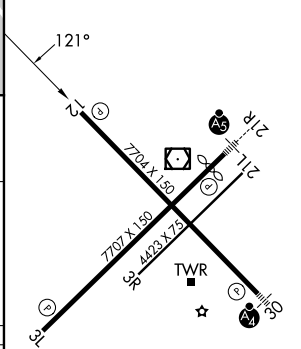


NW-1, 16 APR 2026 to 14 MAY 2026

NW-1, 16 APR 2026 to 14 MAY 2026



ELEV 410	TDZE 401
----------	----------



CATEGORY	A	B	C	D
RNP 0.11 DA		781-1	380 (400-1)	
RNP 0.30 DA		883-1 3/8	482 (500-1 3/8)	

**AUTHORIZATION REQUIRED**

- REIL Rwy 3L and 12
- MIRL Rwy 12-30
- HIRL Rwy 3L-21R