

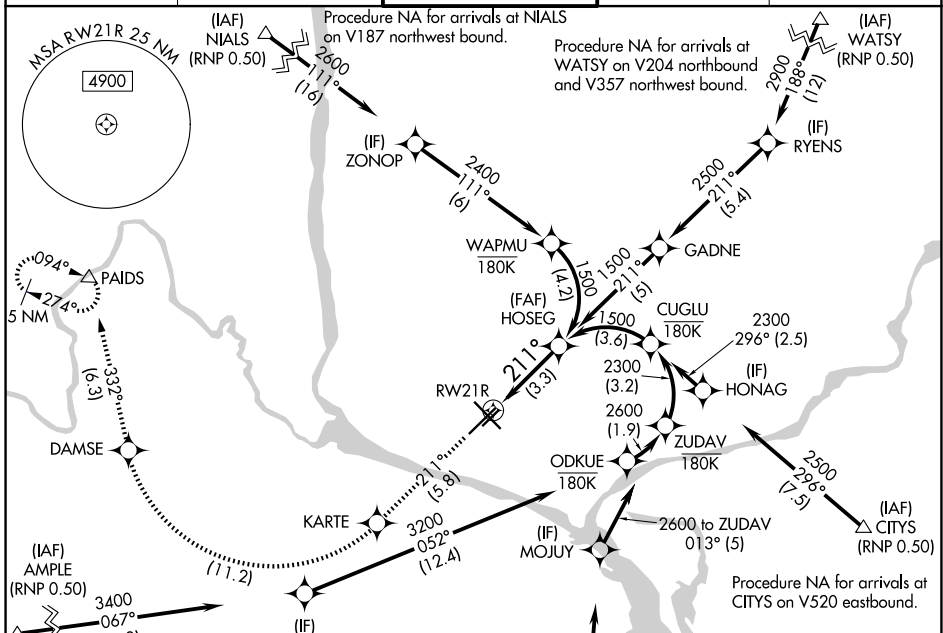
APP CRS <b>211°</b>	Rwy Ldg TDZE Apt Elev	<b>7110</b> <b>404</b> <b>410</b>
------------------------	-----------------------------	---

# RNAV (RNP) Z RWY 21R

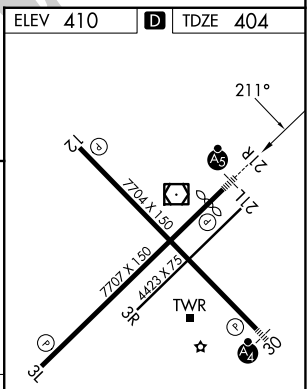
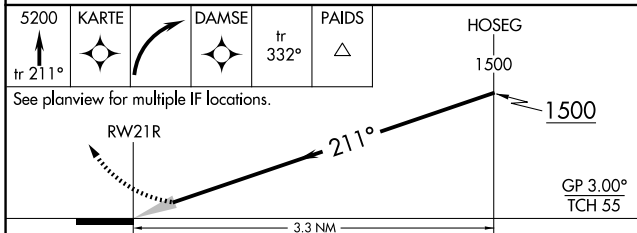
TRI-CITIES (PSC)

<p><b>⚠</b> For uncompensated Baro-VNAV systems, procedure NA below -14°C (7°F) or above 54°C (130°F). GPS required. RF required. For inoperative MALSR, increase RNP 0.11 all Cats visibility to RVR 5700 and RNP 0.30 all Cats visibility to 1 3/8 mile.</p>	<p>MALSR</p>	<p>MISSED APPROACH: Climb to 5200 on track 211° to KARTE, right turn to DAMSE, and on track 332° to PAIDS and hold.</p>
--	--------------	---

ATIS <b>125.65</b>	SPOKANE APP CON * <b>128.75 377.2</b>	TRI-CITIES TOWER * <b>135.3 (CTAF) 0 285.55</b>	GND CON <b>121.8</b>	UNICOM <b>122.95</b>
-----------------------	--	--	-------------------------	-------------------------



ELEV 410	<b>D</b> TDZE 404
----------	-------------------



CATEGORY	A	B	C	D
RNP 0.11 DA		754/33	350 (400-3/4)	
RNP 0.30 DA		832/48	428 (500-1)	

**AUTHORIZATION REQUIRED**

REIL Rwy 3L and 12 **Ⓛ**  
 MIRL Rwy 12-30 **Ⓛ**  
 HIRL Rwy 3L-21R **Ⓛ**

NW-1, 16 APR 2026 to 14 MAY 2026

NW-1, 16 APR 2026 to 14 MAY 2026