

APP CRS 301°	Rwy Ldg TDZE Apt Elev	7704 405 410
------------------------	-----------------------------	---

RNAV (RNP) Z RWY 30

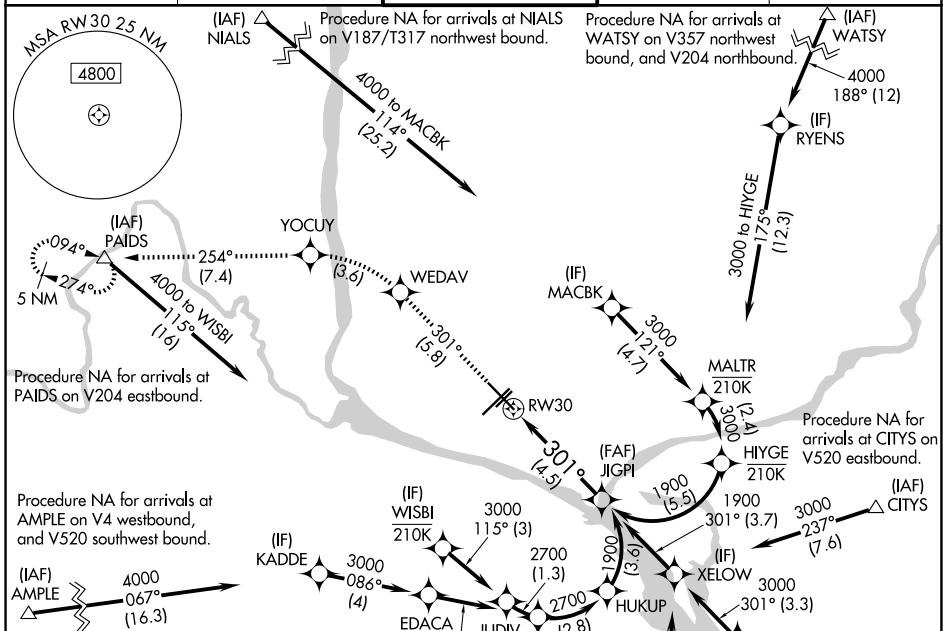
TRI-CITIES (PSC)

RNP AR APCH - GPS, RF. Authorization required. From JUDIV, XELOW, HIYGE, KADDE, OLODE: min RNP 0.50.

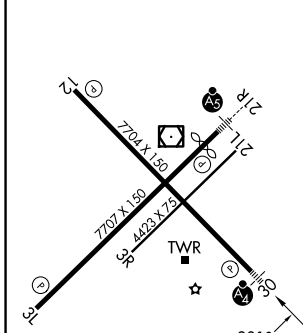
For uncompensated Baro-VNAV systems, procedure NA below -14°C or above 54°C. For inop ALS, increase RNP 0.30 visibility all Cats to 1 3/8 SM.

MALSF MISSED APPROACH: Climb to 5200 on 301° track to WEDAV, left turn to YOCUY, and track 254° to PAIDS and hold, continue climb-in-hold to 5200.

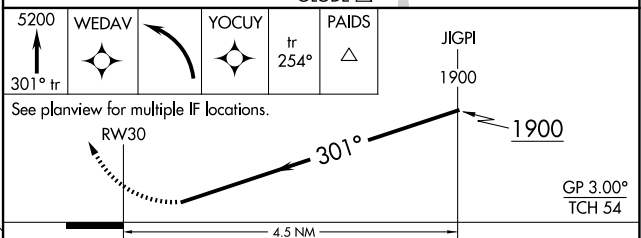
ATIS 125.65	SPOKANE APP CON * 128.75 377.2	TRI-CITIES TOWER * 135.3 (CTAF) 0 285.55	GND CON 121.8	UNICOM 122.95
-----------------------	--	--	-------------------------	-------------------------



ELEV 410	D TDZE 405
----------	-------------------



Procedure NA for arrivals at OLODE on V298 southeast bound.



CATEGORY	A	B	C	D
RNP 0.11 DA		778-3/4	373 (400-3/4)	
RNP 0.30 DA		852-1	447 (500-1)	

AUTHORIZATION REQUIRED

NW-1, 16 APR 2026 to 14 MAY 2026

NW-1, 16 APR 2026 to 14 MAY 2026