

WAAS CH <b>58006</b> W12A	APP CRS <b>121°</b>	Rwy Ldg TDZE Apt Elev	<b>7704</b> <b>401</b> <b>410</b>
---------------------------------	------------------------	-----------------------------	---

# RNAV (GPS) Y RWY 12

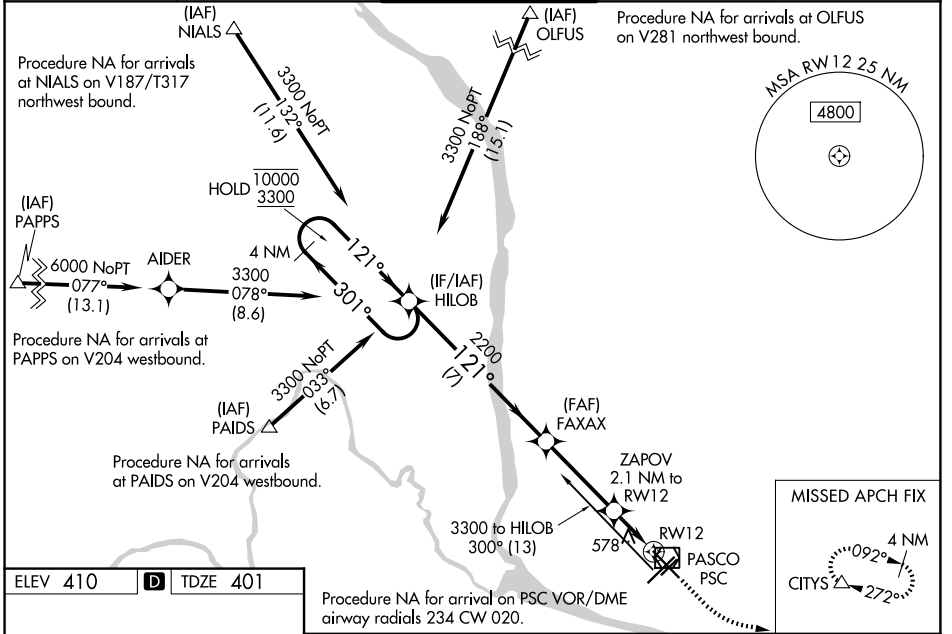
TRI-CITIES (PSC)

RNP APCH - GPS.

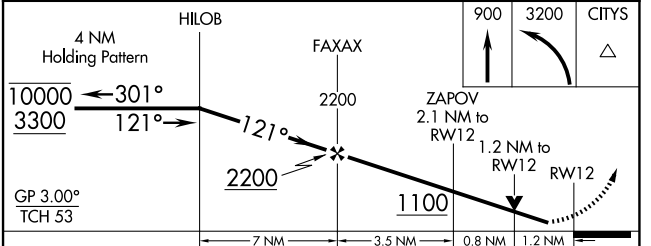
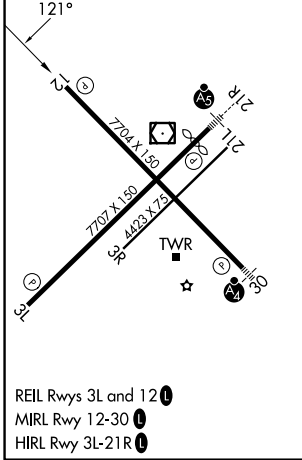
⚠ For uncompensated Baro-VNAV systems, LNAV/VNAV NA below -14°C or above 54°C. Rwy 12 helicopter visibility reduction below ¾ SM NA. Baro-VNAV and VDP NA when using HRI altimeter setting. When local altimeter setting not received, use HRI altimeter setting: increase LPV DA to 696 feet and all visibilities ¼ SM, and increase LNAV/VNAV DA to 935 feet and all visibilities ¼ SM. Increase all MDAs 100 feet and LNAV and Circling Cats C and D visibility ¼ SM.

MISSED APPROACH: Climb to 900 then climbing left turn to 3200 direct CITYS and hold.

ATIS <b>125.65</b>	SPOKANE APP CON * <b>128.75 377.2</b>	TRI-CITIES TOWER * <b>135.3 (CTAF) 285.55</b>	GND CON <b>121.8</b>	UNICOM <b>122.95</b>
-----------------------	--	--	-------------------------	-------------------------



ELEV 410	<b>D</b>	TDZE 401
----------	----------	----------



CATEGORY	A	B	C	D
LPV DA		601-¾	200 (200-¾)	
LNAV/VNAV DA		840-1¼	439 (500-1¼)	
LNAV MDA	840-1	439 (500-1)	840-1¼	439 (500-1¼)
CIRCLING	900-1	940-1	1040-1¾	1100-2¼
	490 (500-1)	530 (600-1)	630 (700-1¾)	690 (700-2¼)

NW-1, 16 APR 2026 to 14 MAY 2026

NW-1, 16 APR 2026 to 14 MAY 2026