

WAAS CH 40303 W21A	APP CRS 211°	Rwy Ldg TDZE Apt Elev	7110 404 410
--	------------------------	-----------------------------	---

RNAV (GPS) Y RWY 21R

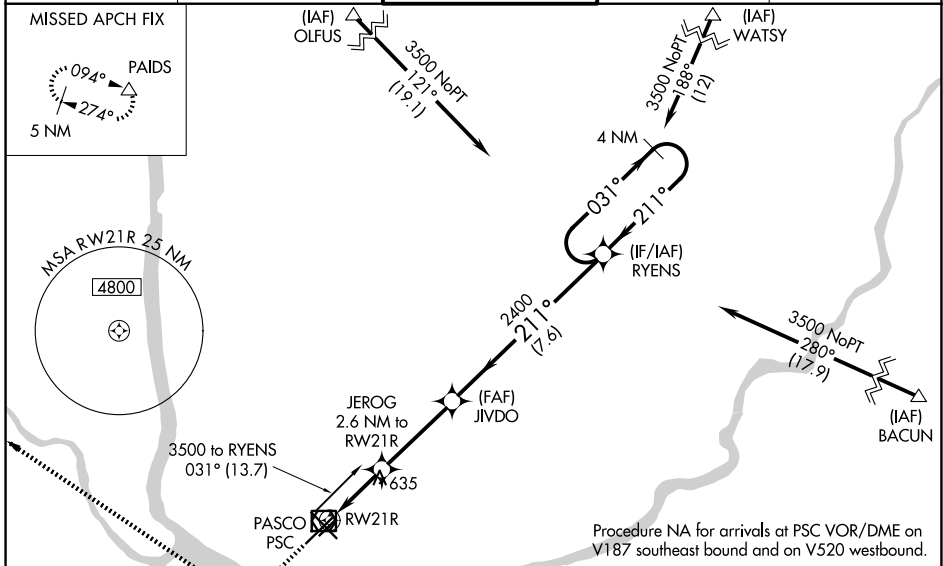
TRI-CITIES (PSC)

⚠ Baro-VNAV NA when using Hermiston altimeter setting. For uncompensated Baro-VNAV systems, LNAV/VNAV NA below -1.4°C (7°F) or above 54°C (130°F).
⚠ DME/DME RNP-0.3 NA. VDP NA with Hermiston altimeter setting. When local altimeter setting not received, use Hermiston altimeter setting and increase all DA 95 feet and all MDA 100 feet; increase LNAV/VNAV all Cats visibility 3/8 mile; LNAV Cat C and D visibility 3/8 mile and Circling Cat C and D visibility 1/4 mile.
 # RVR 1800 authorized with use of FD or AP or HUD to DA, NA when using Hermiston altimeter setting.

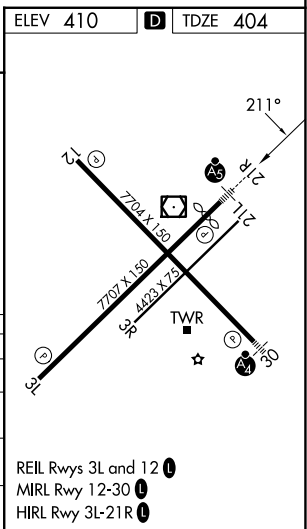
MALSR

MISSED APPROACH:
 Climb to 1100 then climbing right turn to 5200 direct PAIDS and hold, continue climb-in-hold to 5200.

ATIS 125.65	SPOKANE APP CON * 128.75 377.2	TRI-CITIES TOWER * 135.3 (CTAF) 285.55	GND CON 121.8	UNICOM 122.95
------------------------------	---	---	--------------------------------	--------------------------------



ELEV 410		D TDZE 404	
1100	5200	PAIDS	
*LNAV only			
RW21R		JEROG 2.6 NM to RW21R	RYENS
1.5 NM	1.1 NM	3.5 NM	7.6 NM
1280*		2400	211°
A		B	C
CATEGORY	LPV DA#		DA
	604/24		200 (200-1/2)
LNAV/VNAV	844/51		440 (500-1)
LNAV MDA	940/24 536 (600-1/2)		940/55 536 (600-1)
CIRCLING	940-1 530 (600-1)		1040-1 3/4 630 (700-1 3/4)
			1100-2 1/4 690 (700-2 1/4)



NW-1, 16 APR 2026 to 14 MAY 2026

NW-1, 16 APR 2026 to 14 MAY 2026