

WAAS CH 40206 W03A	APP CRS 031°	Rwy Ldg 7707 TDZE 410 Apt Elev 410
--	------------------------	---

RNAV (GPS) Y RWY 3L

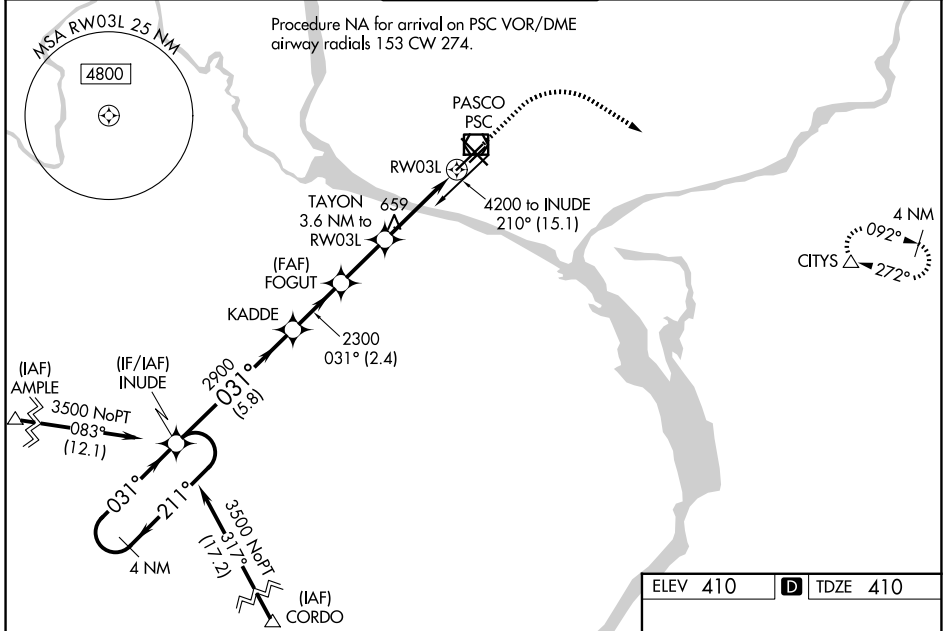
TRI-CITIES (PSC)

RNP APCH.

Baro-VNAV NA when using Hermiston altimeter setting. For uncompensated Baro-VNAV systems, LNAV/VNAV NA below -14°C or above 54°C. VDP NA with Hermiston altimeter setting. When local altimeter setting not received, use Hermiston altimeter setting: increase all DA 95 feet and all MDA 100 feet. Increase LPV all Cats visibility ¼ mile, LNAV/VNAV all Cats visibilities ⅓ mile: increase LNAV Cats C and D visibility ⅓ mile. Circling Cat C and D visibility ¼ mile.

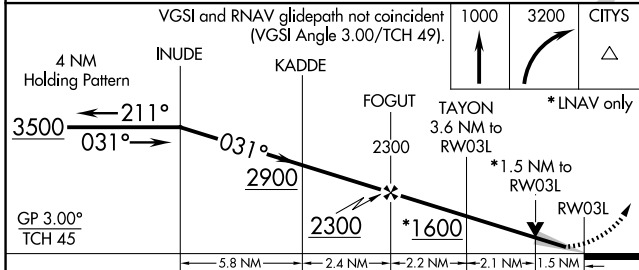
MISSED APPROACH:
Climb to 1000 then climbing right turn to 3200 direct CITIES and hold.

ATIS 125.65	SPOKANE APP CON * 128.75 377.2	TRI-CITIES TOWER * 135.3 (CTAF) 285.55	GND CON 121.8	UNICOM 122.95
-----------------------	--	--	-------------------------	-------------------------



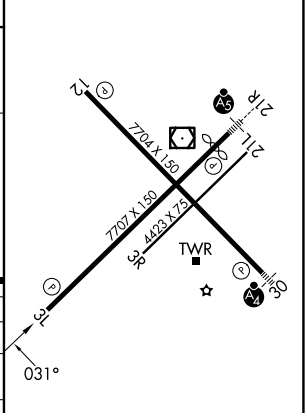
NW-1, 16 APR 2026 to 14 MAY 2026

NW-1, 16 APR 2026 to 14 MAY 2026



ELEV 410	TDZE 410
----------	----------

CATEGORY	A	B	C	D
LPV DA	610-¾ 200 (200-¾)			
LNAV/VNAV DA	708-1 298 (300-1)			
LNAV MDA	920-1	510 (600-1)	920-1¾	510 (600-1¾)
CIRCLING	920-1 510 (600-1)	940-1 530 (600-1)	1040-1¾ 630 (700-1¾)	1100-2¼ 690 (700-2¼)



REIL Rwy 3L and 12
MIRL Rwy 12-30
HIRL Rwy 3L-21R