

| | | |
|---|------------------------|--|
| VOR/DME PSC 113.75 Chan 84(Y) | APP CRS 307° | Rwy Ldg 7704 TDZE 405 Aprt Elev 410 |
|---|------------------------|--|

VOR RWY 30

TRI-CITIES(PSC)

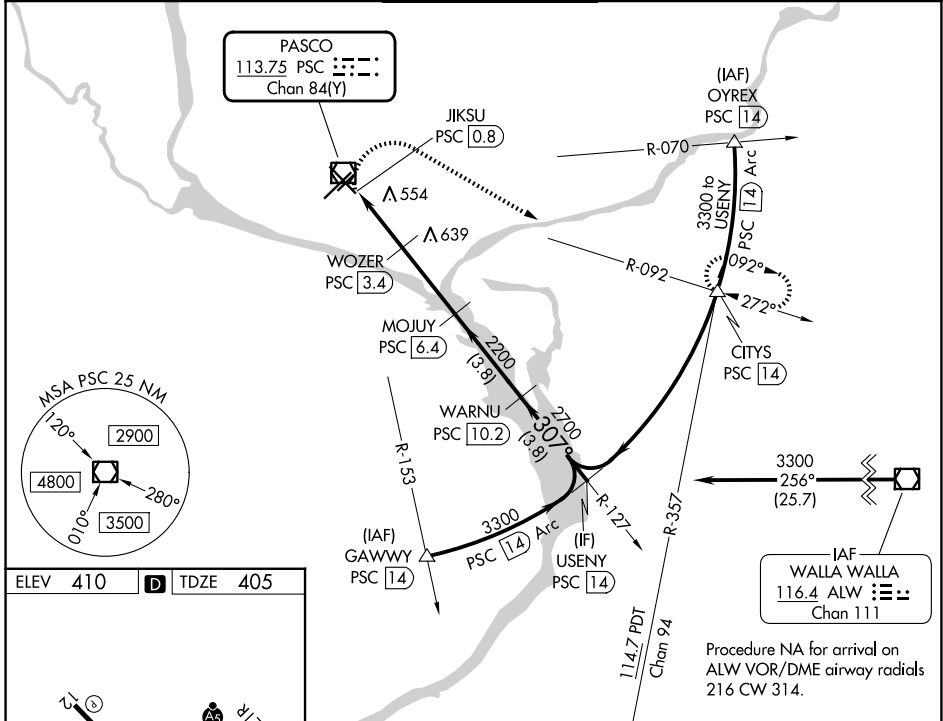
DME required.

⚠ VDP NA when using HRI altimeter setting. Rwy 30 helicopter visibility reduction below 3/4 SM NA. For inop ALS, increase S-30 Cats C and D visibility to 1 1/2 SM. When local climeter setting not received, use HRI altimeter setting and increase all MDAs 100 feet, increase S-30 visibility Cats C and D and Circling visibility Cats C and D 1/2 SM. For inop ALS when using HRI altimeter, increase S-30 Cats C and D visibility 1 1/2 SM.

MALSF

MISSED APPROACH: Climbing right turn to 3200 on heading 105° and PSC VOR/DME R-092 to CITYS/PSC 14 DME and hold.

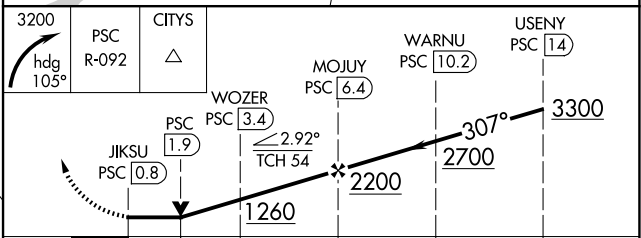
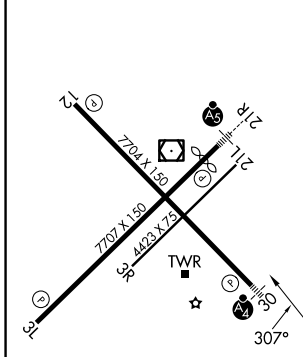
| | | | | |
|-----------------------|---|---|-------------------------|-------------------------|
| ATIS 125.65 | SPOKANE APP CON* 128.75 377.2 | TRI-CITIES TOWER* 135.3 (CTAF) 285.55 | GND CON 121.8 | UNICOM 122.95 |
|-----------------------|---|---|-------------------------|-------------------------|



NW-1, 16 APR 2026 to 14 MAY 2026

NW-1, 16 APR 2026 to 14 MAY 2026

| | | |
|----------|----------|----------|
| ELEV 410 | D | TDZE 405 |
|----------|----------|----------|



| CATEGORY | A | B | C | D |
|----------|-----------------------|-------------------|----------------------------|----------------------------|
| S-30 | 820-3/4 415 (500-3/4) | | 820-1 415 (500-1) | |
| CIRCLING | 900-1 490 (500-1) | 940-1 530 (600-1) | 1040-1 3/4 630 (700-1 3/4) | 1100-2 1/4 690 (700-2 1/4) |