

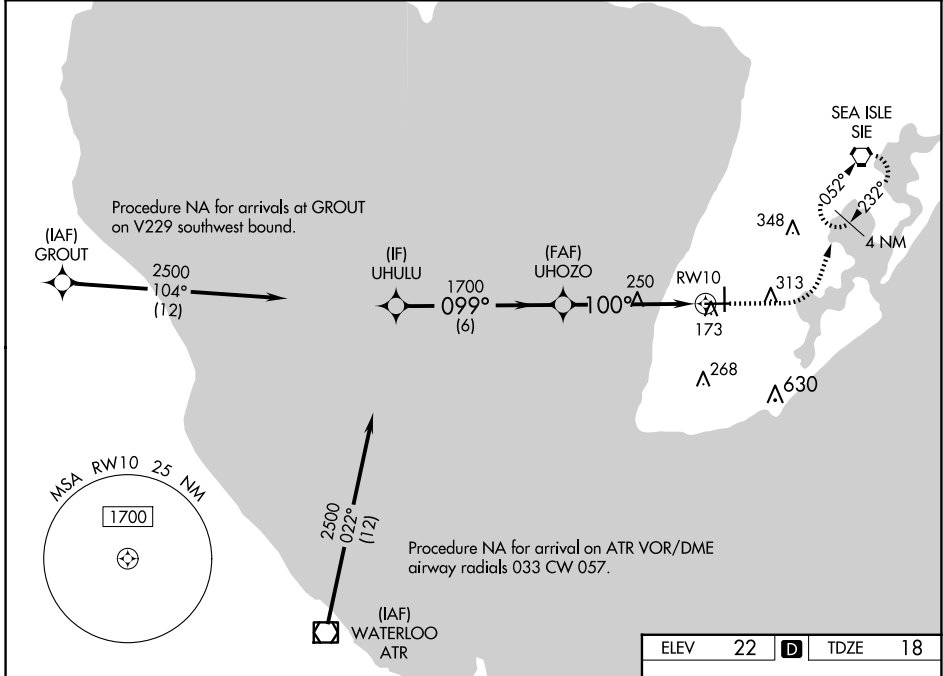
WAAS CH 93541 W10A	APP CRS 100°	Rwy Idg TDZE Apt Elev	5000 18 22
--	------------------------	-----------------------------	---------------------------------------

RNAV (GPS) RWY 10

CAPE MAY COUNTY (WWD)

RNP APCH.	<p>▼ For uncompensated Baro-VNAV systems, LNAV/VNAV NA below -15° C or above 54° C. Circling NA for Cats C and D northeast of Rwy 19 and 28. Rwy 10 helicopter visibility reduction below 3/4 SM NA. Circling Rwy 1 NA at night.</p> <p>▲ MISSED APPROACH: Climb to 500 then climbing left turn to 2000 direct SIE VORTAC and hold.</p>
-----------	---

AWOS-3PT 118.275	ATLANTIC CITY APP CON 124.6 327.125	CLNC DEL 121.7	UNICOM 122.7 (CTAF) 0
----------------------------	---	--------------------------	---------------------------------



NE-2, 16 APR 2026 to 14 MAY 2026

NE-2, 16 APR 2026 to 14 MAY 2026

	ELEV 22	D	TDZE 18
<p>VGSI and RNAV glidepath not coincident (VGSI Angle 3.00/TCH 45).</p> <p>500 2000 SIE</p> <p>* LNAV only</p>			
CATEGORY	A	B	C
LPV DA	285-7/8 267 (300-7/8)		
LNAV/VNAV DA	336-1 318 (400-1)		
LNAV MDA	500-1 482 (500-1)	500-1 3/8 482 (500-1 3/8)	
CIRCLING	500-1 478 (500-1)	620-1 598 (600-1)	620-1 1/2 598 (600-1 1/2) 980-3 958 (1000-3)
<p>HIRL Rwy 1-19 0</p> <p>MIRL Rwy 10-28 0</p>			