


WAAS CH 81813 W31A	APP CRS 309°	Rwy Idg TDZE Apt Elev	5997 174 178
--	------------------------	-----------------------------	---

RNAV (GPS) RWY 31

ALICE INTL (ALI)

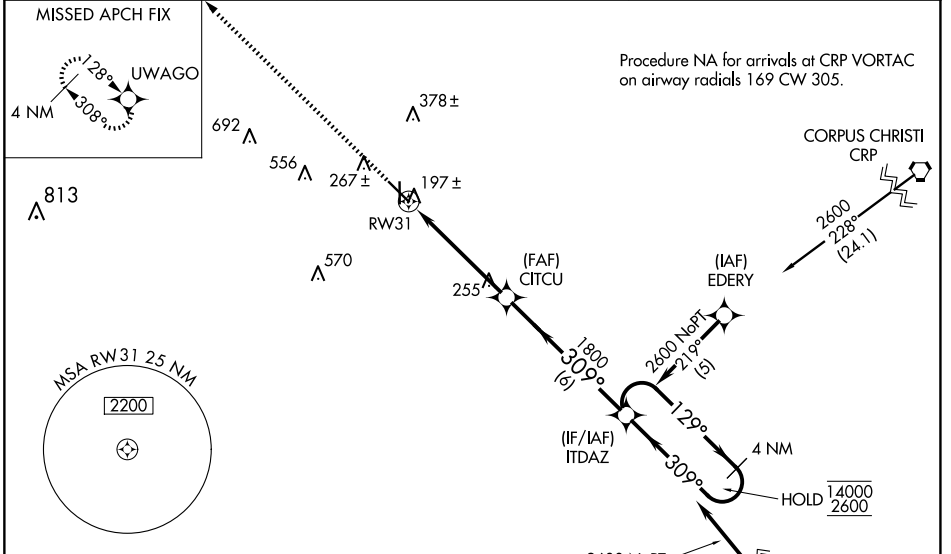
RNP APCH - GPS.

⚠ Baro-VNAV and VDP NA when using Nueces County altimeter setting. For uncompensated Baro-VNAV systems, LNAV/VNAV NA below -15°C or above 54°C. When local altimeter setting not received, use Nueces County altimeter setting: increase LPV DA to 494 feet, LNAV/VNAV DA to 524 feet; increase all MDA 60 feet and LNAV Cat C and D, and Circling Cat D visibility ¼ SM. For inop ALS, increase all LPV and LNAV/VNAV visibilities to ¾ SM. For inop ALS with Nueces County altimeter setting, increase all LPV visibilities to ¾ SM and LNAV Cat C and D visibility to 1/8 SM.

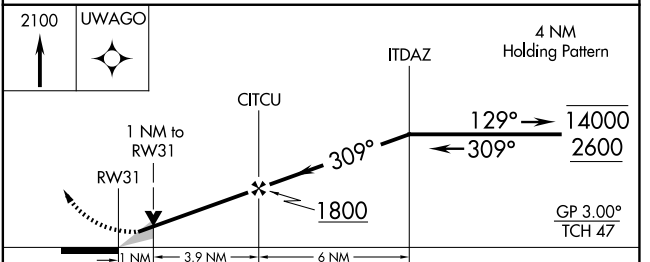
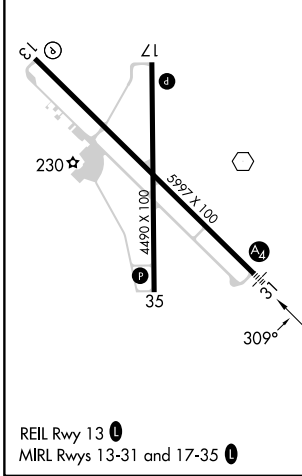
MALS 

MISSED APPROACH: Climb to 2100 direct UWAGO and hold.

ASOS 119.225	KINGSVILLE APP CON * 119.9 290.45	UNICOM 123.0 (CTAF) 0
------------------------	---	---------------------------------



ELEV 178	TDZE 174
----------	----------



CATEGORY	A	B	C	D
LPV DA		437-3/4	263 (300-3/4)	
LNAV/VNAV DA		467-3/4	293 (300-3/4)	
LNAV MDA		520-3/4	346 (400-3/4)	
CIRCLING	600-1 422 (500-1)	640-1 462 (500-1)	700-1 1/2 522 (600-1 1/2)	900-2 1/4 722 (800-2 1/4)

SC-3, 16 APR 2026 to 14 MAY 2026

SC-3, 16 APR 2026 to 14 MAY 2026