

ALTUS, OKLAHOMA

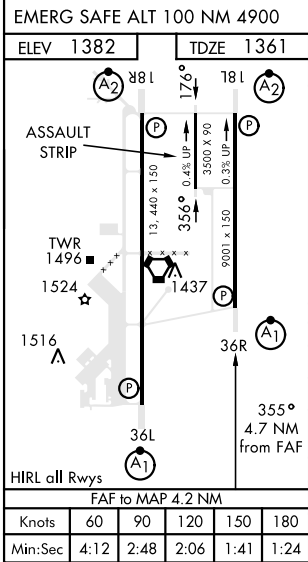
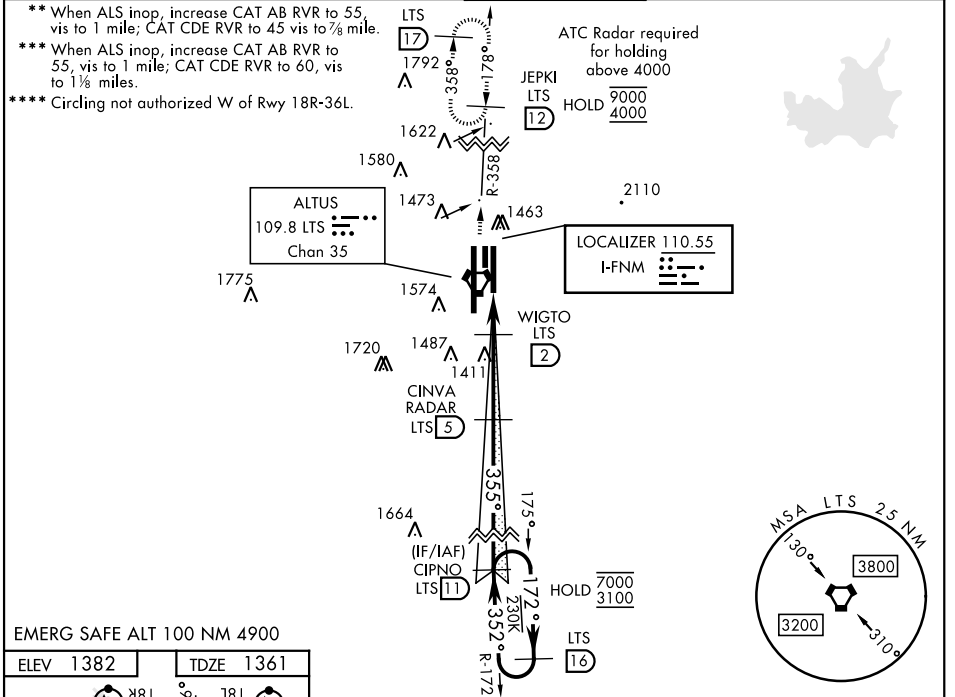
ILS or LOC RWY 36R

LOC I-FNM 110.55	APCH CRS 355°	Rwy Idg 9001 TDZE 1361 Arprt Elev 1382
----------------------------	-------------------------	---------------------------------------------------------------------

AL-482 [USAF]

ALTUS AFB (KLTS)

DME or RADAR required.			ALSF-1 	MISSED APPROACH: Climb to 4000, intercept LTS VORTAC R-358 to 12 DME (JEPKI) and hold.		
ATIS ★ 109.8 273.5	FORT WORTH CENTER 133.5 350.35	APP CON 125.1 353.7	TOWER ★ 119.65 254.4	GND CON 121.85 275.8	CLNC DEL 120.65 284.7	



VGS1 and ILS glidepath not coincident. 4000 LTS R-358 JEPKI LTS R-358 WIGTO 2 VORTAC (CFMZT)	7000	3100	352°	3100	355°	2900	1780	3.1 NM	1.1 NM	0.5 NM
	3100	3100	172°	3100	355°	2900	1780	3.1 NM	1.1 NM	0.5 NM
CATEGORY S-ILS 36R* S-LOC 36R** **** C CIRCLING	A	B	C	D	E					
LOCAL ALTIMETER, WITHOUT LAST STEPDOWN FIX S-LOC 36R*** **** C CIRCLING	1780-1 398 (400-1)	1840-1 458 (500-1)	1880-1 1/2 498 (500-1 1/2)	2080-2 1/4 698 (700-2 1/4)	2180-2 3/4 798 (800-2 3/4)					
						1780/24	419 (400-1/2)	1780/40	419	(400-3/4)
						1780-1 398 (400-1)	1840-1 458 (500-1)	1880-1 1/2 498 (500-1 1/2)	2080-2 1/4 698 (700-2 1/4)	2180-2 3/4 798 (800-2 3/4)

ALTUS, OKLAHOMA
Amdt 5 14JUL22

34°40'N-99°16'W

ALTUS AFB (KLTS)

ILS or LOC RWY 36R

SC-1, 16 APR 2026 to 14 MAY 2026

SC-1, 16 APR 2026 to 14 MAY 2026