

ALTUS, OKLAHOMA

ILS or RNAV (GPS) Y RWY 36L

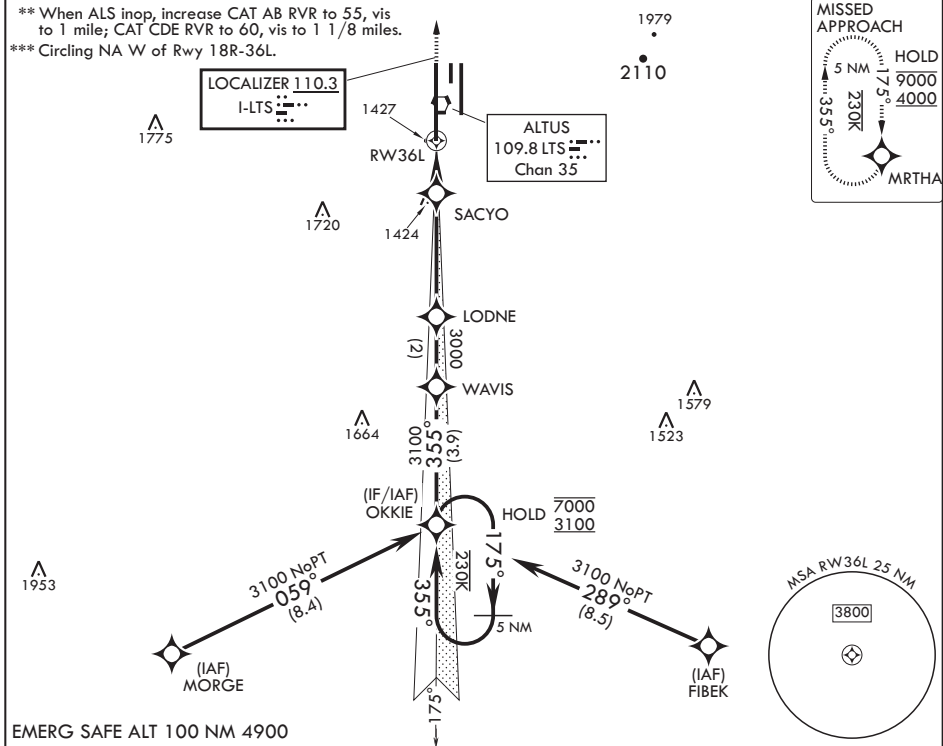
LOC I-LTS 110.3	APCH CRS 355°	Rwy Idg 13,440	TDZE 1354
		Arpt Elev 1382	

AL-482 (USAF)

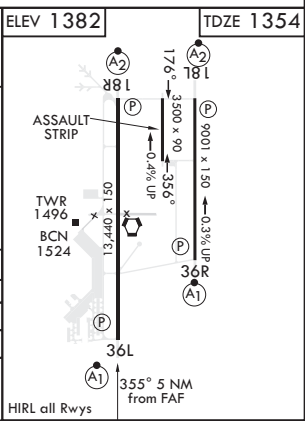
ALTUS AFB (KLTS)

RNP APCH for LNAV	ALSF-1	MISSED APPROACH: Climb to 4000 direct MRTHA and hold.
RNAV1-GPS required for ILS.		
<p>▼ * When ALS inop, increase CAT ABCDE RVR to 40, vis to 3/4 mile; RVR 18 authorized with use of FD or AP or HUD to DA.</p>		

ATIS* 109.8 273.5	FORT WORTH CENTER 133.5 350.35	APP CON 125.1 353.7	TOWER* 119.65 254.4	GND CON 121.85 275.8	CLNC DEL 120.65 284.7
-----------------------------	--	-------------------------------	-------------------------------	--------------------------------	---------------------------------



OKKIE (12)		WAVIS		LODNE		SACYO		VORTAC		
7000		3100		355°		3000		1800		
3100		355°		3100		3000		1800		
GS 3.00°		TCH 55		3000		1800		1800		
3.5 NM		1.5 NM		1 NM to RW 36L		36L		36L		
CATEGORY	A	B	C	D	E	ELEV 1382		TDZE 1354		
S-ILS 36L*	1554/24		200		(200-½)		4000		MRTHA	
LNAV MDA**	1740/24	386 (400-½)	1740/35	386	(400-¾)		ELEV 1382		TDZE 1354	
CIRCLING***	1780-1 398 (400-1)	1840-1 458 (500-1)	1880-1½ 498 (500-1½)	2080-2¼ 698 (700-2¼)	2180-2¾ 798 (800-2¾)	ELEV 1382		TDZE 1354		



ALTUS, OKLAHOMA

34°40'N - 99°16'W

ALTUS AFB (KLTS)

Amdt 3 14JUL22
TERPS

ILS or RNAV (GPS) Y RWY 36L

SC-1, 16 APR 2026 to 14 MAY 2026

SC-1, 16 APR 2026 to 14 MAY 2026