

ALTUS, OKLAHOMA

# RNAV (RNP) X RWY 36L

APCH CRS	Rwy Idg	13,440
355°	TDZE	1354
	Arprt Elev	1382

AL-482 (USAF)

ALTUS AFB (KLTS)

RNP AR APCH - RF

ALS-F1

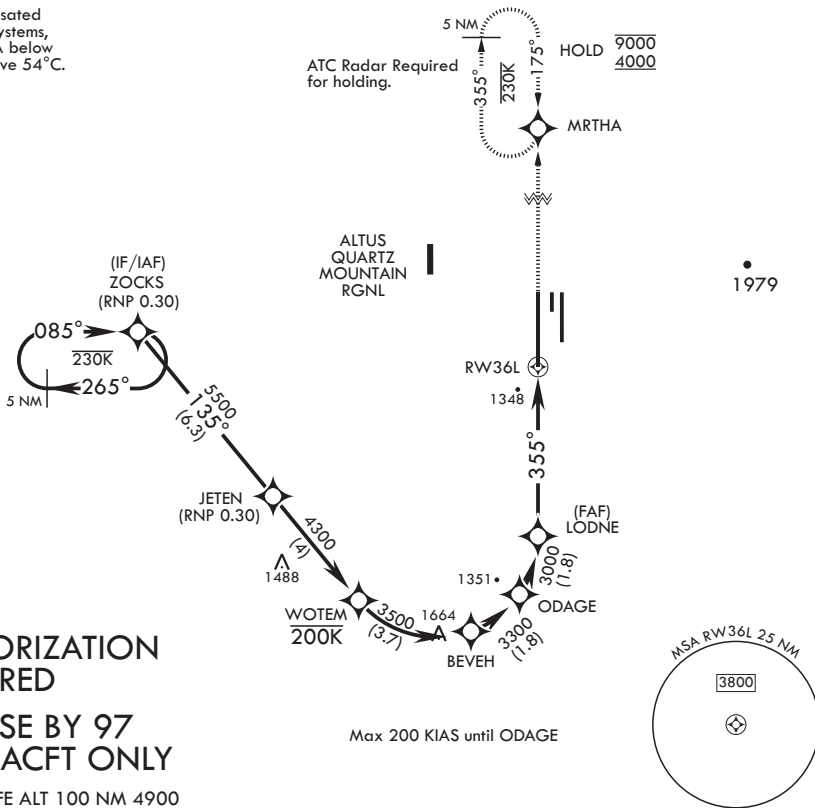
MISSED APPROACH: Climb to 4000 on track 355° to MRTHA and hold.

\* When ALS inop, increase RVR to 45, vis to 7/8 mile.  
 \*\* When ALS inop, increase RVR to 55, vis to 1 mile.



ATIS ★ 109.8 273.5	APP CON 125.1 353.7	TOWER ★ 119.65 254.4	GND CON 121.85 275.8	CLNC DEL 120.65 284.7
-----------------------	------------------------	-------------------------	-------------------------	--------------------------

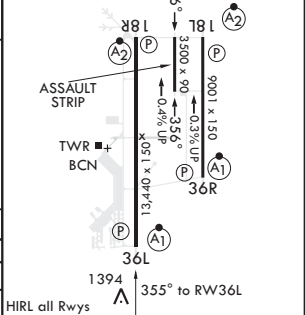
For uncompensated Baro-VNAV systems, procedure NA below -17°C or above 54°C.



**AUTHORIZATION REQUIRED**  
**FOR USE BY 97 AMW ACFT ONLY**

EMERG SAFE ALT 100 NM 4900

ZOCKS	JETEN	WOTEM	BEVEH	ODAGE	LODNE	RW36L	4000	MRTHA	ELEV 1382	TDZE 1354
8000	5500	4300	3500	3300	3000	3000	355°	355°		
GP 3.00°										
TCH 55										
CATEGORY	A	B	C	D						
RNP 0.10 DA*	1646/24	292	(300-1/2)							
RNP 0.30 DA**	1732/35	378	(400-3/8)							



ALTUS, OKLAHOMA  
 Amdt 2 14JUL22

34°40'N - 99°16'W

ALTUS AFB (KLTS)

# RNAV (RNP) X RWY 36L

SC-1, 16 APR 2026 to 14 MAY 2026

SC-1, 16 APR 2026 to 14 MAY 2026