

ALTUS, OKLAHOMA

# RNAV (GPS) Z RWY 36R

APCH CRS <b>355°</b>	Rwy Idg <b>9001</b>
	TDZE <b>1361</b>
	Arprt Elev <b>1382</b>

AL-482 (USAF)

ALTUS AFB (KLTS)

RNP APCH. DME/DME RNP-0.3 NA

ALSF-1

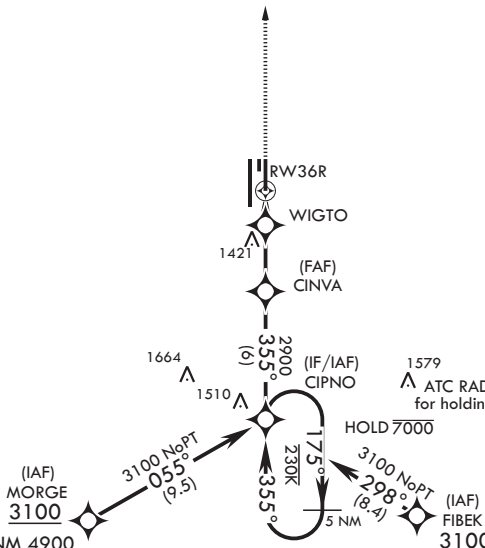
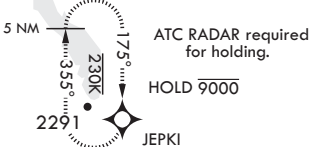
MISSED APPROACH: Climb to 4000 direct JEPKI and hold.

\* When ALS inop increase RVR to 40, vis to 3/4 mile.  
 \*\* When ALS inop increase CAT AB RVR to 35, vis to 1 mile; CAT CDE RVR 50, vis to 1 mile.

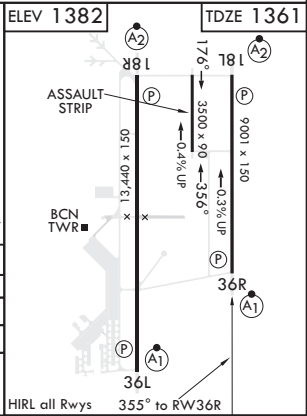
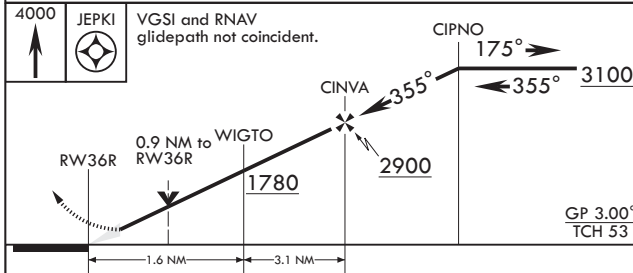
ATIS* <b>109.8 273.5</b>	FORT WORTH CENTER <b>133.5 350.35</b>	APP CON <b>125.1 353.7</b>	TOWER* <b>119.65 254.4</b>	GND CON <b>121.85 275.8</b>	CLNC DEL <b>120.65 284.7</b>
-----------------------------	--	-------------------------------	-------------------------------	--------------------------------	---------------------------------

\*\*\* Circling NA W of Rwy 36L-18R.

For uncompensated Baro-VNAV systems, procedure NA below -17°C (2°F) or above 54°C (130°F).



EMERG SAFE ALT 100 NM 4900



CATEGORY	A	B	C	D	E
RNAV/VNAV DA*	1611/24		250	(300-½)	
RNAV MDA**	1700/24	339 (400-½)	1700/26	339 (400-½)	
CIRCLING***	1780-1	1840-1	1880-1½	2080-2¼	2180-2¾
	398 (400-1)	458 (500-1)	498 (500-1½)	698 (700-2¼)	798 (800-2¾)

ALTUS, OKLAHOMA

34°40'N - 99°16'W

ALTUS AFB (KLTS)

Amdt 3 14JUL22

# RNAV (GPS) Z RWY 36R

SC-1, 16 APR 2026 to 14 MAY 2026

SC-1, 16 APR 2026 to 14 MAY 2026