

ALTUS, OKLAHOMA

# VOR or TACAN RWY 36L

ALTUS AFB (KLTS)

VORTAC LTS <b>109.8</b> Chan <b>35</b>	APCH CRS <b>360°</b>	Rwy Idg <b>13,440</b> TDZE <b>1354</b> Arprt Elev <b>1382</b>
--	-------------------------	---

AL-482 [USAF]

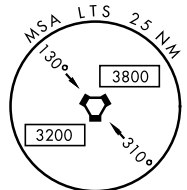
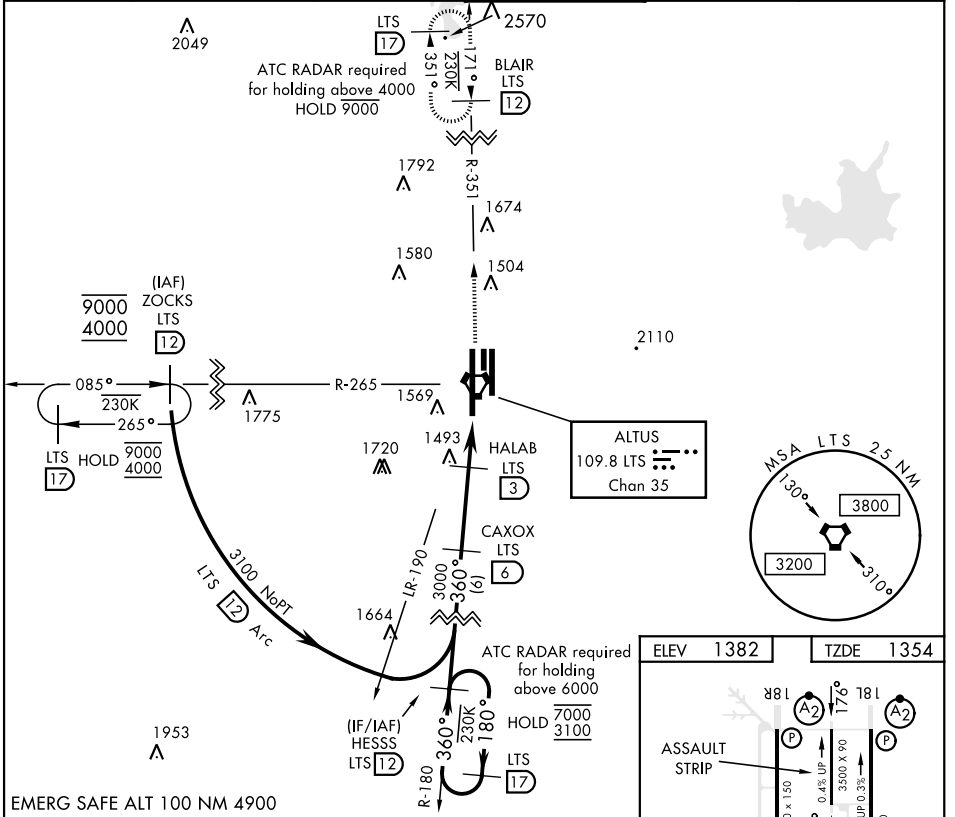
DME required.



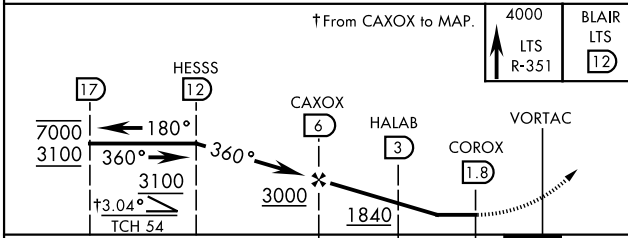
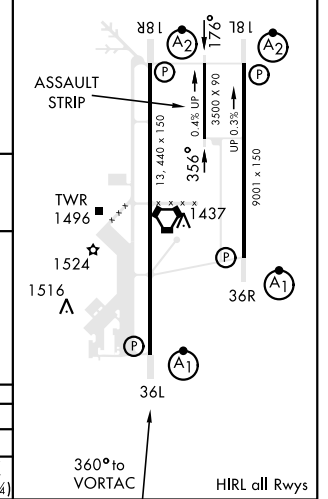
MISSED APPROACH: Climb to 4000 on LTS VORTAC R-351 to BLAIR and hold.

▼ \* When ALS inop, increase CAT AB RVR to 55 and vis to 1 mile, CAT CDE RVR to 60 and vis to 1½ miles.  
 \*\* Circling not authorized W of Rwy 18R-36L.

ATIS ★ <b>109.8 273.5</b>	FORT WORTH CENTER <b>133.5 350.35</b>	APP CON <b>125.1 353.7</b>	TOWER ★ <b>119.65 254.4</b>	GND CON <b>121.85 275.8</b>	CLNC DEL <b>120.65 284.7</b>
------------------------------	--	-------------------------------	--------------------------------	--------------------------------	---------------------------------



ELEV 1382	TZDZE 1354
-----------	------------



CATEGORY	A	B	C	D	E
S-36L*	1760/24	406 (400-½)	1760/40	406 (400-¾)	
CIRCLING**	1780-1 398 (400-1)	1840-1 458 (500-1)	1880-1½ 498 (500-1½)	2080-2¼ 698 (700-2¼)	2180-2¾ 798 (800-2¾)

ALTUS, OKLAHOMA

34°40'N-99°16'W

ALTUS AFB (KLTS)

Amdt 4 14JUL22

# VOR or TACAN RWY 36L

SC-1, 16 APR 2026 to 14 MAY 2026

SC-1, 16 APR 2026 to 14 MAY 2026