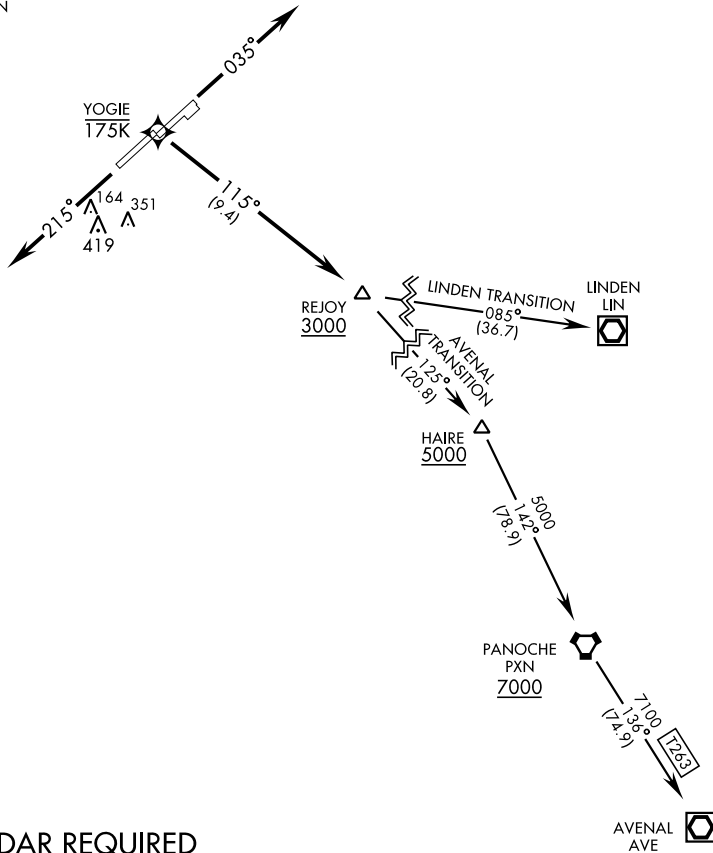


REJOY ONE DEPARTURE (RNAV) (REJOY1•REJOY)

TRAVIS AFB (KSUU)
FAIRFIELD, CALIFORNIA

ATIS 135.55 292.125
CLNC DEL
127.55 335.8
GND CON
121.8 289.4
TOWER
120.75 254.4
TRAVIS DEP CON
126.6 306.9

[USAF] AL-488 (CIV)



SW-2, 16 APR 2026 to 14 MAY 2026

SW-2, 16 APR 2026 to 14 MAY 2026

RNAV1 - GPS.

ATC RADAR REQUIRED

DEPARTURE ROUTE DESCRIPTION

TAKEOFF RWY 3 L/R: Climb on heading 035° to 2000, expect ATC RADAR vectors to YOGIE, then track 115° to cross REJOY at or above 3000. Thence...

TAKEOFF RWY 21L/R: Climb on heading 215° to 2000, expect ATC RADAR vectors to cross REJOY at or above 3000. Thence...

...via assigned transition. Maintain ATC assigned altitude. Expect further clearance to filed altitude within 10 minutes after departure.

AVENAL TRANSITION: (REJOY1•AVE)
LINDEN TRANSITION: (REJOY 1•LIN)

REJOY ONE DEPARTURE (RNAV) (REJOY1•REJOY)

Orig 07OCT21

FAIRFIELD, CALIFORNIA
TRAVIS AFB (KSUU)