

(SEATO.SEATO4) 23334
SEATO FOUR ARRIVAL

AL-488 (FAA)

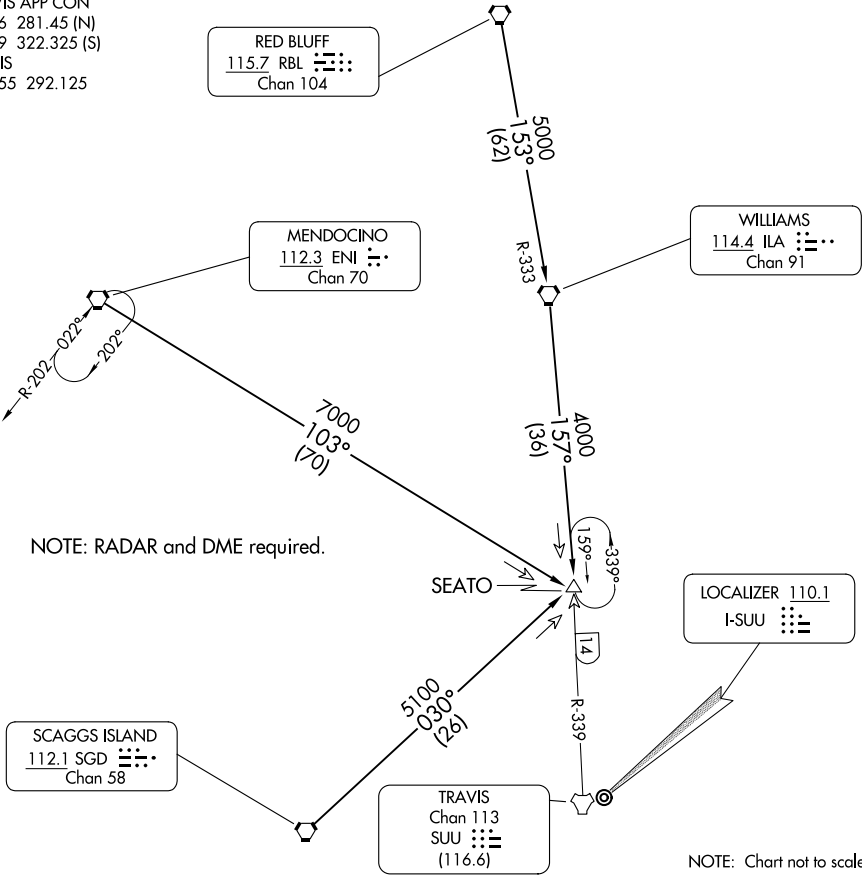
TRAVIS AFB (KSUU)
 FAIRFIELD, CALIFORNIA

TRAVIS APP CON
 126.6 281.45 (N)
 119.9 322.325 (S)
 D-ATIS
 135.55 292.125

RED BLUFF
 115.7 RBL
 Chan 104

MENDOCINO
 112.3 ENI
 Chan 70

WILLIAMS
 114.4 ILA
 Chan 91



NOTE: RADAR and DME required.

SEATO

LOCALIZER 110.1
 I-SUU

TRAVIS
 Chan 113
 SUU
 (116.6)

NOTE: Chart not to scale.

ARRIVAL ROUTE DESCRIPTION

MENDOCINO TRANSITION (ENI.SEATO4): From over ENI VORTAC via ENI R-103 to SEATO INT. Thence . . .

RED BLUFF TRANSITION (RBL.SEATO4): From over RBL VORTAC via RBL R-153 and ILA R-333 to ILA VORTAC, then via ILA R-157 to SEATO INT. Thence . . .

SCAGGS ISLAND TRANSITION (SGD.SEATO4): From over SGD VORTAC via SGD R-030 to SEATO INT. Thence . . .

. . . . From over SEATO INT:

RWY 3L/R: Expect RADAR vectors for ILS or LOC RWY 3L approach.

RWY 21L/R: Expect RADAR vectors for ILS or LOC RWY 21L approach.

LOST COMMUNICATIONS:

RWY 3L via SEATO then TACAN RWY 3L.

RWY 21R via SEATO then TACAN RWY 21R.

SEATO FOUR ARRIVAL
 (SEATO.SEATO4) 12DEC13

FAIRFIELD, CALIFORNIA
 TRAVIS AFB (KSUU)

SW-2, 16 APR 2026 to 14 MAY 2026

SW-2, 16 APR 2026 to 14 MAY 2026