

TACAN RWY 21L

TACAN SUU Chan 113	APCH CRS 213°	Rwy Idg 10,995 TDZE 58 Arprt Elev 63
------------------------------	-------------------------	---

[USAF]

TRAVIS AFB (KSUU)

▽ * When ALS inop, increase CAT AB RVR to 55, vis to 1 mile, CAT CDE vis to 1½ miles.
 ** Circling not authorized NW of Rwy 3L-21R.

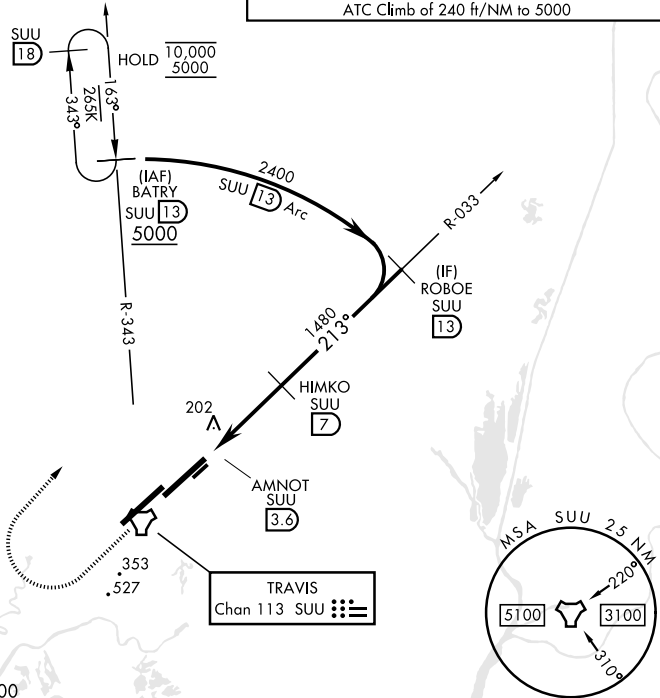
ALSF-2


MISSED APPROACH: Climb to 2300 then climbing right turn to 5000 on heading 028° and SUU TACAN R-343 to BATRY/13 DME and hold.

ATIS 135.55 292.125	APP CON 119.9 322.325 (S) 126.6 281.45 (N)	TOWER 120.75 254.4	GND CON 121.8 289.4
-------------------------------	--	------------------------------	-------------------------------

Knots	60	120	180	240	300	360
V/V(fpm)	240	480	720	960	1200	1440
ATC Climb of 240 ft/NM to 5000						

When circling to Rwy 3L at night, operational VGSI required, remain at or above VGSI glidepath until threshold.



EMERG SAFE ALT 100 NM 12,600

2300	5000	SUU R-343	BATRY SUU 13	VGSI and descent angles not coincident (VGSI Angle 2.80/TCH 75).	ELEV 63	TDZE 58
------	------	-----------	--------------	--	---------	---------

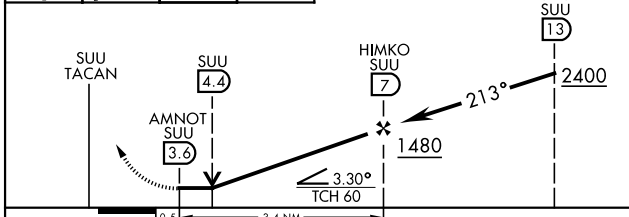


Diagram details: TWR. ASSAULT STRIP. 213° heading. 10,995 + 150 = 11,145 altitude. 3980 x 20. 032° heading. 217° heading.

CATEGORY	A	B	C	D	E
S-21L*	500/24	442 (500-½)	500/45	442 (500-¾)	
CIRCLING**	560-1 497 (500-1)	660-1 597 (600-1)	840-2½ 777 (800-2¼)	1200-3	1137 (1200-3)

HIRL Rwy 3R-21L
TDZL/RCLS Rwy 3R, 21L

TACAN RWY 21L

SW-2, 16 APR 2026 to 14 MAY 2026

SW-2, 16 APR 2026 to 14 MAY 2026