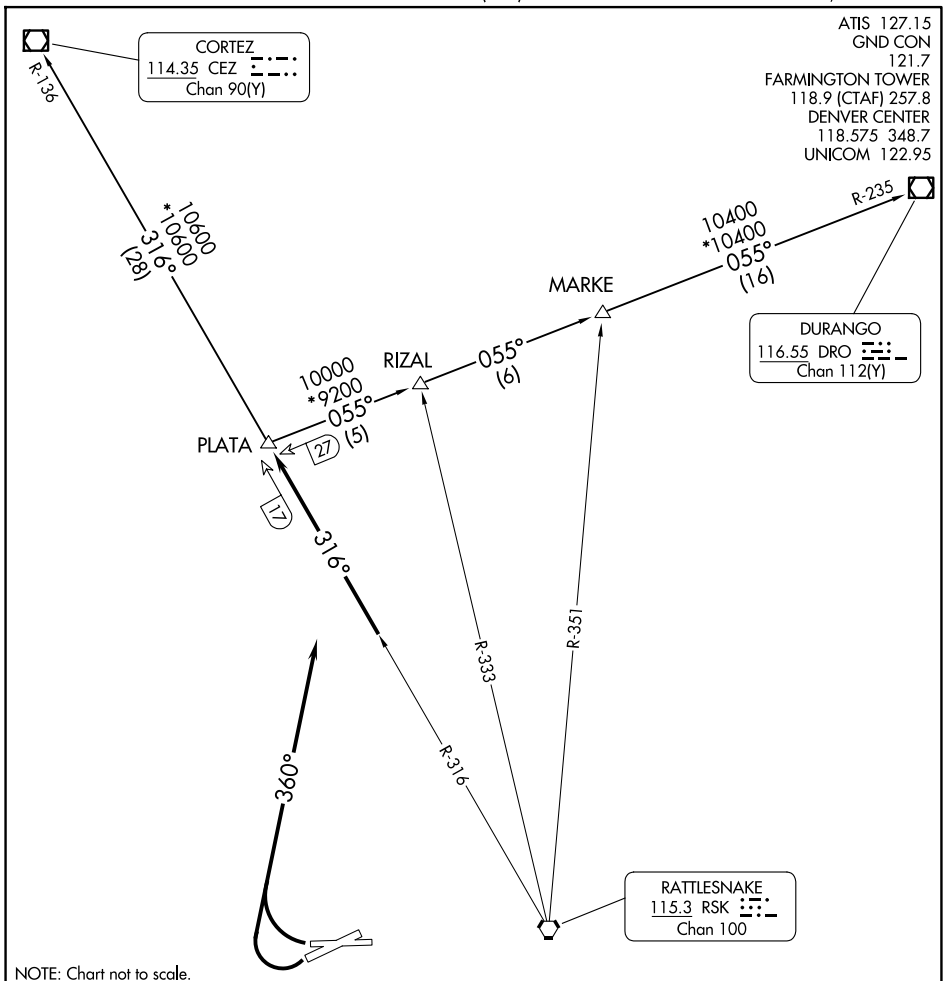


(PLATA1.PLATA) 23334

# PLATA ONE DEPARTURE

AL-493 (FAA)

FOUR CORNERS RGNL (F<sup>M</sup>N)  
FARMINGTON, NEW MEXICO



SW-1, 16 APR 2026 to 14 MAY 2026

SW-1, 16 APR 2026 to 14 MAY 2026



## DEPARTURE ROUTE DESCRIPTION

Aircraft departure Runways 23 and 25 turn right heading 360° to intercept RSK R-316 to PLATA INT. Thence via (transition) or (assigned route).

CORTEZ TRANSITION (PLATA1.CEZ): From over PLATA INT via RSK R-316 and CEZ R-136 to CEZ VOR/DME.

DURANGO TRANSITION (PLATA1.DRO): From over PLATA INT via DRO R-235 to DRO VOR/DME.

MARKE TRANSITION (PLATA1.MARKE): From over PLATA INT via DRO R-235 to MARKE INT.

RIZAL TRANSITION (PLATA1.RIZAL): From over PLATA INT via DRO R-235 to RIZAL INT.

# PLATA ONE DEPARTURE

(PLATA1.PLATA) 05DEC96

FARMINGTON, NEW MEXICO  
FOUR CORNERS RGNL (F<sup>M</sup>N)